



Family-Friendly Places to Ride

Clarksburg Branch Line Trail, West Sacramento

- Trailheads: South River Rd and Gregory Ave and Locks Dr and Jefferson Blvd in West Sacramento
- Distance: 3.2 miles
- Difficulty: Easy

River Walk Trail, West Sacramento

- Trailheads: I Street Bridge and Tower Bridge
- Distance: 1.1 miles
- Difficulty: Easy

American River Parkway

- The American River Parkway includes over 30 miles of easy to moderate walking and biking trails along the American River. You can access the Parkway from multiple locations throughout Sacramento County. To learn more, visit the American River Parkway Foundation's website: <https://arpf.org/visit/int-map-wpp/>


More Learn to Ride Resources for All Ages

- Jibe Project Ride Smart Videos: <https://jibe.org/school/project-ride-smart>
- American League of Cyclists Smart Cycling Videos: <https://www.bikeleague.org/ridesmartvideos>
- Bike New York teaches Sesame Street residents how to ride bikes: <https://www.bike.nyc/blog/news/bike-new-york-goes-to-sesame-street/>
- Walk 'n Rollers ABC Quick Check: https://www.youtube.com/watch?app=desktop&v=IBtKSIKM_Y8
- Walk 'n Rollers Bike Safety Infographics: <http://walkmorebikemore.org/biking/>
- Safe Kids Worldwide Bicycle Helmet Fitting guide (English): https://www.safekids.org/sites/default/files/documents/helmet_fit_test.pdf
- Safe Kids Worldwide Bicycle Helmet Fitting guide (Spanish): https://www.safekids.org/sites/default/files/documents/helmet_fit_test_2013-spanish.pdf

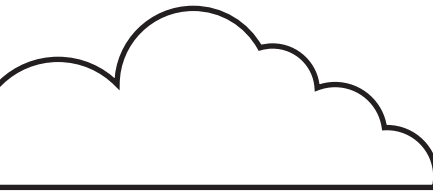




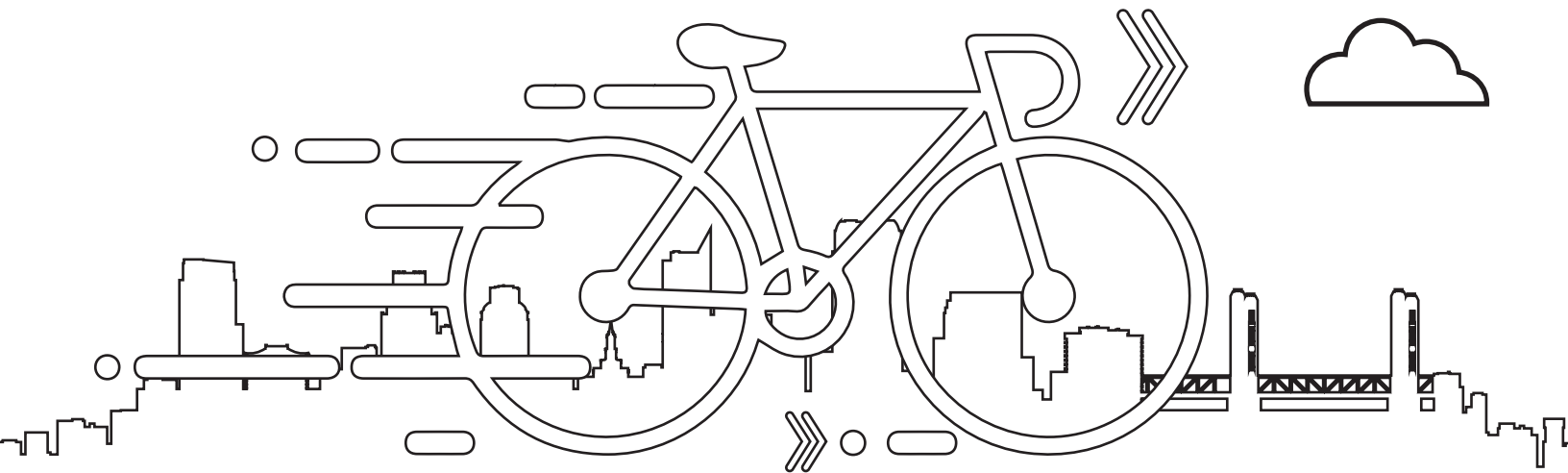
BIKE



YOUR



CITY



LOG YOUR TRIPS AND MILES AT
MAYISBIKEMONTH.COM

RIDE YOUR BIKE EVERY DAY
DURING THE MONTH OF MAY

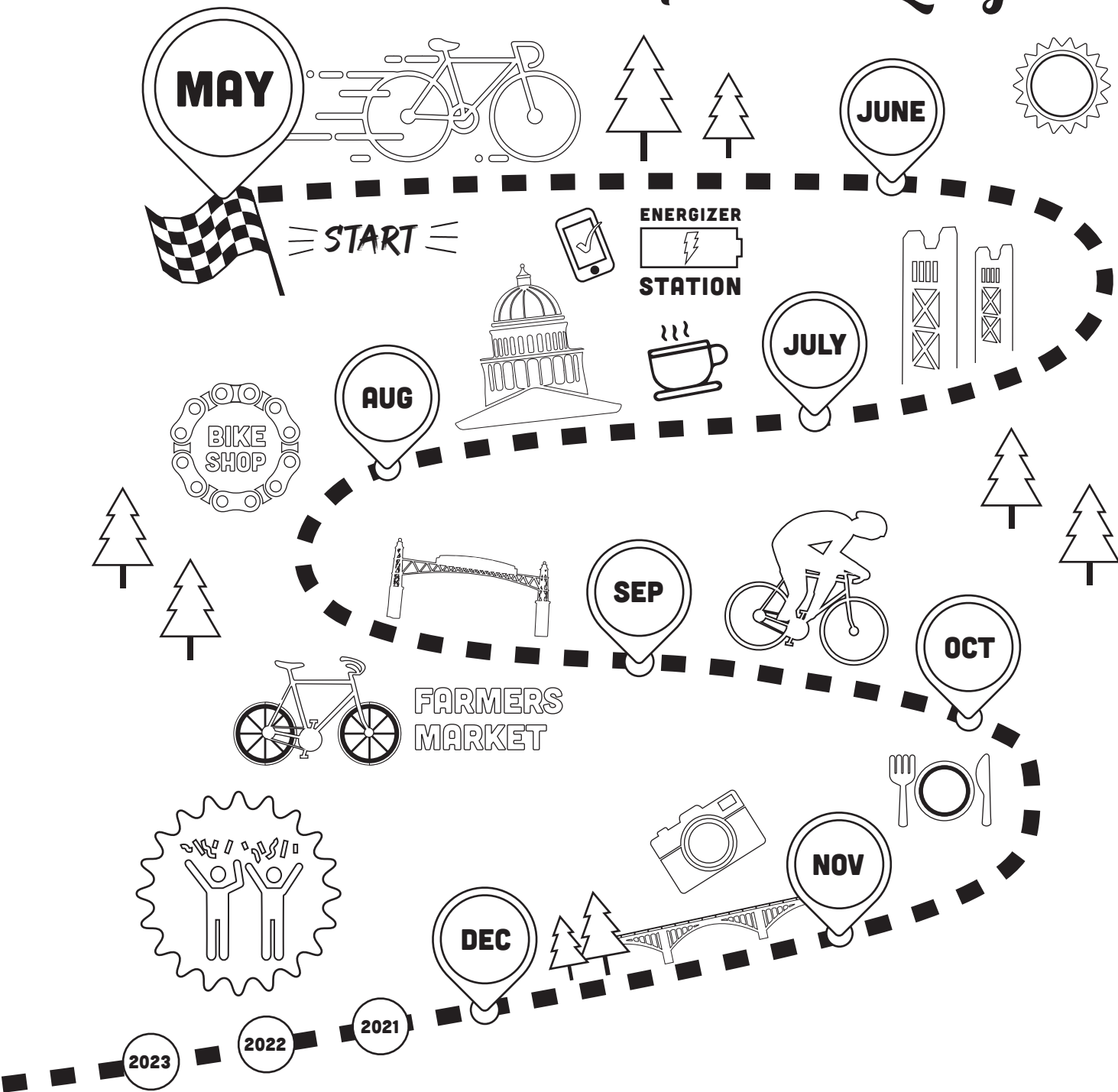
 [MAYISBIKEMONTH.COM](https://www.mayisbikemonth.com)

 @MAYISBIKEMONTH

 @MAYISBIKEMONTH

Bike Your City

All Year Long



LOG YOUR TRIPS AND MILES AT
MAYISBIKEMONTH.COM
RIDE YOUR BIKE EVERY DAY

 MAYISBIKEMONTH.COM

 @MAYISBIKEMONTH

 @MAYISBIKEMONTH