

**Paving the Way for Safe Routes to School**  
**Ella Elementary Walk Audit Report**  
**March 2015**



**PROJECT STAFF**

**WALKS****Sacramento**

Kirin Kumar	Project Coordinator
Miha Tomuta	Project Coordinator
Emily Alice Gerhart	Project Coordinator

**ACKNOWLEDGMENTS**

With a special thank you to the participants who contributed to this report and their continued support in promoting safe routes to Ella Elementary.

Rob Gregor	Ella Elementary School
Nou Vang	Ella Elementary School
Crystal Ledger	Harmony Health Family Resource Center
Van Boeck	Yuba County Department of Public Works
Deputy Frank Knight	Yuba County Sheriff’s Office
Jeannine Friemark	Yuba County Child Support Services

Table of Contents

SCHOOL INFORMATION ..... 2

    Mode Split..... 3

    Existing Conditions ..... 4

    Infrastructure Improvements Planned or in Progress ..... 4

        Olivehurst Ave. Improvements ..... 4

        Olivehurst Sustainable Community and Economic Revitalization Plan ..... 5

    Parent Concerns..... 5

        National Center for Safe Routes to School Parent Survey ..... 5

IDENTIFYING BARRIERS TO WALKING AND BIKING ..... 7

    Walk Audit..... 7

    Traffic Observations ..... 7

    Yuba Coalition Meetings ..... 8

    Meetings with Law Enforcement ..... 8

INFRASTRUCTURE RECOMMENDATIONS ..... 9

    General recommendations: ..... 17

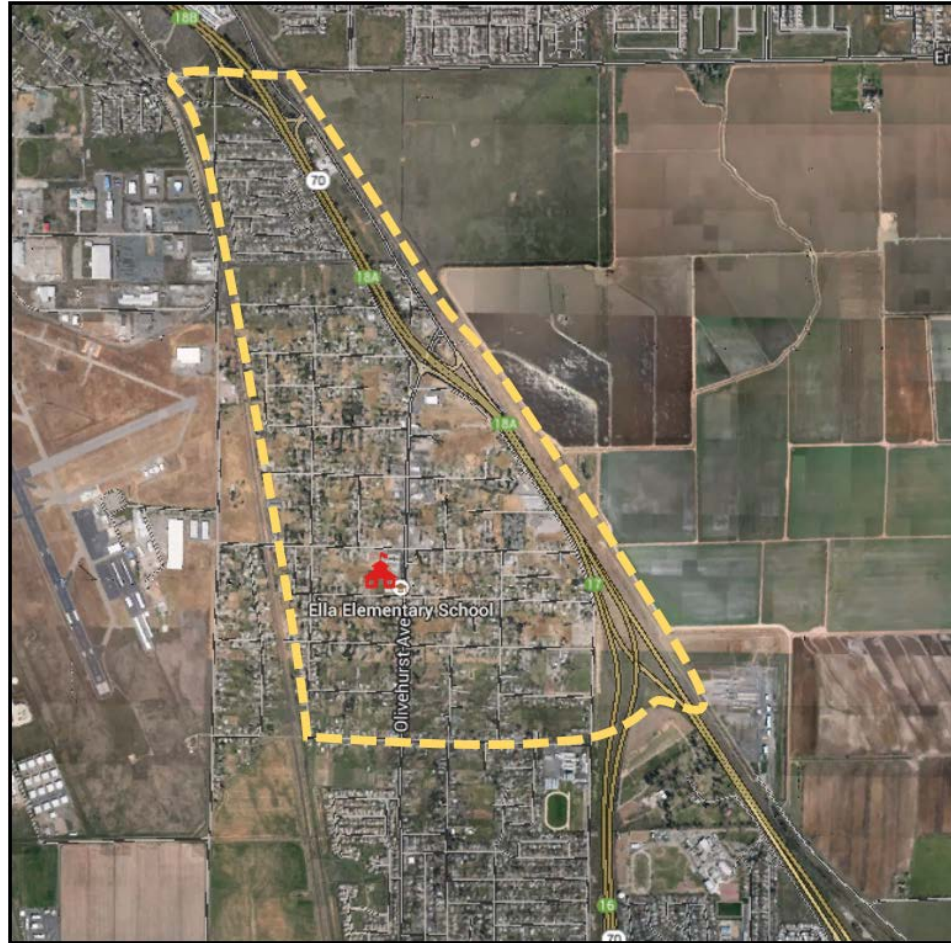
MAP OF IDENTIFICATIONS: ..... 18

APPENDIX A: National Center for Safe Routes to School Parent Survey Form ..... 19

APPENDIX B: National Center for Safe Routes to School Travel Tally Form ..... 20

## SCHOOL INFORMATION

Ella Elementary School is located at 4850 Olivehurst Ave. in Olivehurst CA. Ella Elementary is part of the Marysville Joint Unified School District. For the 2013-2014 school year, 502 students were enrolled, of which 96% were eligible for free or reduced price meals.<sup>1</sup> The 2012-2013 attendance boundary is shown below.



---

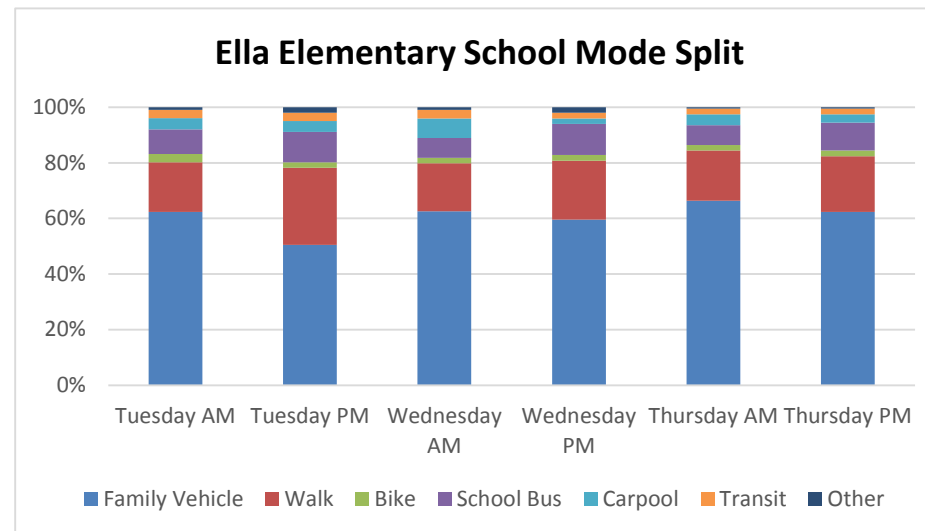
<sup>1</sup> California Department of Education, Free/Reduced Meals Program and CalWORKS Data Files, 2013. Available from <http://www.cde.ca.gov/ds/sd/sd/filespp.asp>. Accessed on December 12, 2014.

## Mode Split

Using the National Center for Safe Routes to School Student Travel Tally<sup>2</sup>, in-class tallies of student travel mode were conducted over a period of three days in January 2014. On average, 22.5% of students either walked or biked to/from school, while the majority of students traveled in a family car. The tally results are shown below.

	Number of Trips	Walk	Bike	School Bus	Family Vehicle	Carpool	Transit	Other
<b>Tuesday AM</b>	194	18%	3%	9%	63%	4%	3%	1%
<b>Tuesday PM</b>	196	28%	2%	11%	51%	4%	3%	2%
<b>Wednesday AM</b>	215	17%	2%	7%	62%	7%	3%	1%
<b>Wednesday PM</b>	204	21%	2%	11%	59%	2%	2%	2%
<b>Thursday AM</b>	222	18%	2%	7%	66%	4%	2%	0.5%
<b>Thursday PM</b>	221	20%	2%	10%	62%	3%	2%	0.5%

Percentages may not total 100% due to rounding.



<sup>2</sup> National Center for Safe Routes to School, Evaluation: Student In-Class Travel Tally, 2013, available <http://saferoutesinfo.org/program-tools/evaluation-student-class-travel-tally>. Accessed December 12, 2014.

## Existing Conditions

Ella Elementary School is located in the rural suburban community of Olivehurst. The town of Olivehurst follows a grid network. There are currently no bike lanes leading to or from Ella Elementary School. Few bike lanes (including striped shoulders) can be found throughout the town. North of 7<sup>th</sup> Avenue, 4-foot attached sidewalks run along both sides of Olivehurst Avenue. However south of 7<sup>th</sup> Avenue, sidewalks continue only on the west side of the road. Very few shade trees line Olivehurst Avenue or the numbered east-west streets. Many two-lane residential streets surrounding the school are cracked, bumpy, and filled with roadway debris. Because of the eroded infrastructure on the edges of the street, walkers and drivers compete for more even surfaces closer to the center of the road. Large ditches and unpaved shoulders make walking difficult and even hazardous. Dogs have been reported charging fences along these residential streets. There are no signalized intersections near the school.



## Infrastructure Improvements Planned or in Progress

### Olivehurst Ave. Improvements

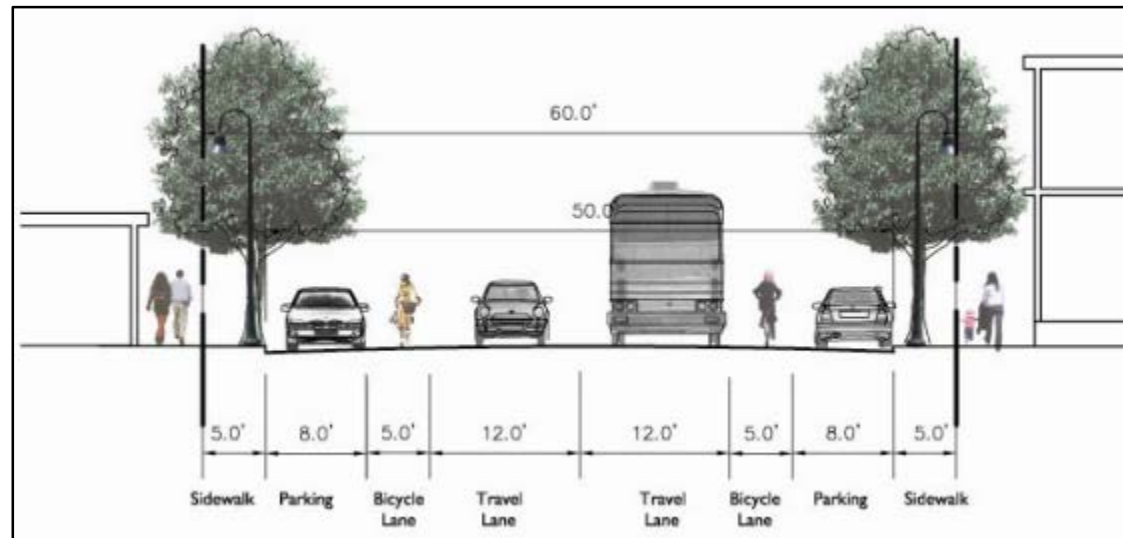
Currently, the Town of Olivehurst is undergoing a roadway improvement project to improve access, safety, and comfort for users along 7<sup>th</sup> Avenue and Olivehurst Avenue. The project will underground utility features to create room for new sidewalks and bike lanes leading to and from Ella Elementary School. With improvements to the pedestrian and cyclist environment, it can be expected that more residents will feel comfortable walking and biking to school and



other every day destinations. Many of the suggestions made in this Walk Audit Report involve extending similar improvements to roadways throughout the community.

### Olivehurst Sustainable Community and Economic Revitalization Plan

The Olivehurst Sustainable Community and Economic Revitalization Plan (OSCER) recommends that Olivehurst Avenue be re-stripped in the future. The road will be re-stripped to have 2 through lanes, bicycle lanes, and on-street parking; thus eliminating the center turn lane. This will provide traffic calming features when motorists stop for oncoming traffic in order to make left turns. Other vehicles will queue behind the turning vehicle, effectively slowing traffic. This in turn may create more breaks in traffic for pedestrians to cross Olivehurst Avenue.



Yuba County OSCER

### Parent Concerns

#### National Center for Safe Routes to School Parent Survey

Parents' attitudes toward walking and biking were surveyed using the National Center for Safe Routes to School Parent Survey.<sup>3</sup> Out of 531 surveys, 163 were returned (31%)

#### Key Results:

<sup>3</sup> National Center for Safe Routes to School, Evaluation: Parent Survey, 2009, available <http://saferoutesinfo.org/program-tools/evaluation-parent-survey>; Internet: accessed May 2012.

- The issues most frequently reported to affect the decision to **not** allow a student to walk or bike to/from school is the lack of safe infrastructure, safety of intersections and crossings, and crime in the community.
- The most common reason cited for allowing a student to walk or bike to/from school is the presence of crossing guards.
- The majority of parents estimated the distance between home and school was less than ½ of a mile.
- The majority of parents reported the family vehicle as the typical mode of arrival and departure from school regardless of the distance a student lives from school

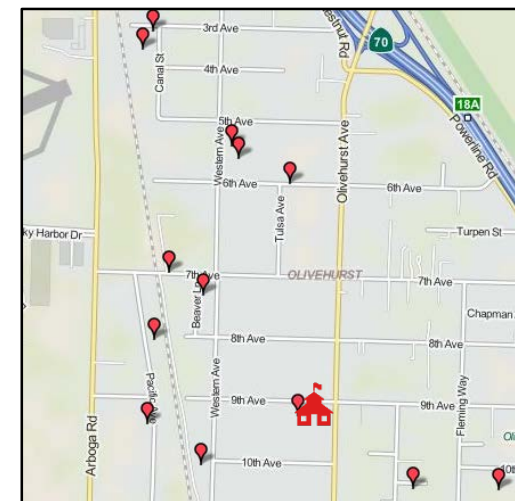
Survey responses of parents' decisions to let their students walk or bike to school make clear the need for both infrastructure improvements and increased law enforcement presence to help create a safer environment around Ella Elementary.

#### Parent Survey Results:

The most prevalent concern of parents who disallow their students to walk or bike to school is the lack of continuous sidewalks and bike lanes. Parents mention the lack of sidewalks along any of the numerical residential streets and along the larger north-south Avenues. Studies have shown that residents of neighborhoods with sidewalks are 47% more likely to be active at least 30 minutes a day.<sup>4</sup> Safe, accessible, well-maintained sidewalks are a fundamental community investment that enhances public health and maximizes social capital.<sup>5</sup> With an increase in overall walking and biking since the outset of the Paving the Way grant, the Olivehurst Avenue and 7<sup>th</sup> Avenue roadway improvements may result in even greater rates of active transportation. However, additional sidewalks and protected bike lanes throughout the community would best support safe student travel. A common principle of Safe Routes to School is that if a roadway is safe for children, it is safe for everyone.

Parents also cite high traffic speeds and other unsafe driver behaviors as deterrents to students walking and biking to school. Drivers commonly speed through Olivehurst especially along Olivehurst Avenue. Drivers, particularly at the 4-way intersection outside of Ella Elementary school, have been observed only partially stopping at stop signs and yielding to pedestrians. Three days after WALKSacramento conducted its Walk Audit, an elementary school girl was struck by a vehicle at this intersection. While the student was relatively unharmed, the incident made clear the necessity for better design at the intersection to improve safety and ensure that students and parents feel comfortable walking and biking to school. Both infrastructure improvements to calm traffic speeds and increased enforcement may help to alleviate these issues.

Finally a common concern of parents who disallow their student to walk or bike to school is the prevalence of crime in Olivehurst. Parents complain of blatant drug activity, excessive speeding, gang activity, and aggressive



<sup>4</sup> Sallis J., et al. "Neighborhood Environments and Physical Activity among Adults in 11 countries." American Journal of Preventive Medicine, Vol. 36, No.2

<sup>5</sup> National Association of City Transportation Officials (NACTO). (October 2012) Urban Street Design Guide pp 24-25. <http://www.nyc.gov/html/dot/downloads/pdf/2012-nacto-urban-street-design-guide.pdf>.



dogs along their students' routes to school. Many parents express a concern about sexual predators in the area. Conversations with local law enforcement confirm that in addition to drug and gang activity, complaints about suspicious characters in the community are common. The map to the right from the National Sex Offender Registry gives an approximation of the number of registered offenders living near Ella Elementary School.

## **IDENTIFYING BARRIERS TO WALKING AND BIKING**

Infrastructure and non-infrastructure barriers to walking and biking to school were identified through a walk audit, field observations, and discussions with school staff, law enforcement, parents, and community members.

### **Walk Audit**

A walk audit was conducted on October 6, 2014. Participants included parents, Yuba County Department of Child Support Services, Harmony Health, the Olivehurst Fire Department, and WALKSacramento Staff. Additional field observations were conducted by WALKSacramento staff around the school. The following map illustrates the walk audit route:

### **Traffic Observations**

Traffic observations were conducted on November 12, 2013 during both the drop-off and pick-up periods. Observations were made at the both entrances of the school (along Olivehurst Avenue and 7<sup>th</sup> Avenue) and at the intersection of Olivehurst Avenue and 7<sup>th</sup> Avenue. Participants included WALKSacramento Staff and a School Wellness Coordinator.

The most common observations are listed below:

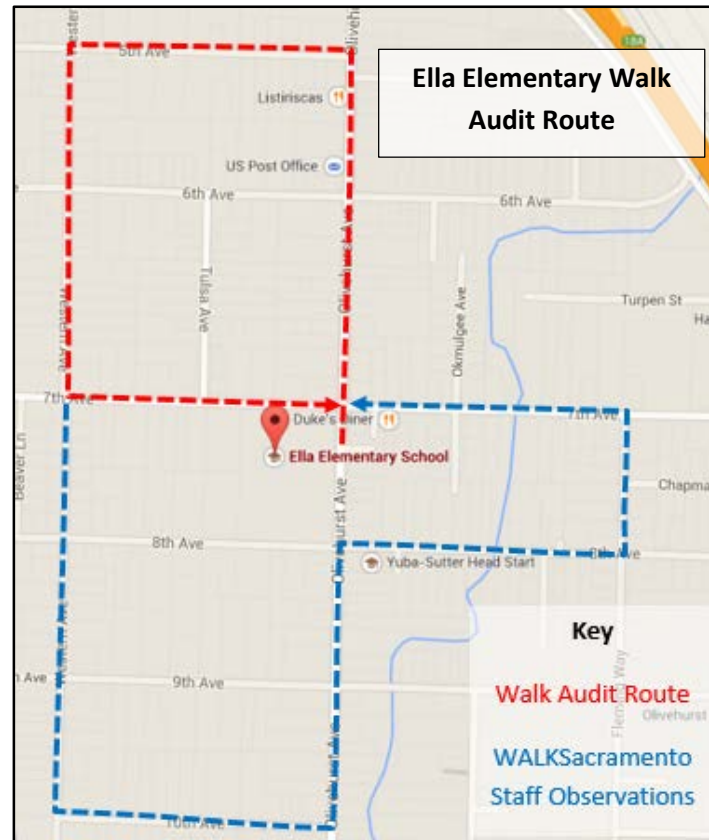
- Motorists were observed speeding along Olivehurst Ave and often stopping at the intersection at 7<sup>th</sup> Avenue within the crosswalks.
- On several occasions, motorists were observed not completely coming to a stop at the intersection of 7<sup>th</sup> and Olivehurst. Motorist making right hand turns sometimes did not stop at all.
- Motorists at the intersection of 7<sup>th</sup> Avenue and Olivehurst Avenue making a right turn onto 7<sup>th</sup> traveling northbound on Olivehurst often clipped the corner, driving where pedestrians could be standing.
- Crossing guards mentioned that some motorists will still continue through the intersection even when the guard has stopped traffic.
- Along 7<sup>th</sup> Avenue, parents were observed either dropping their students off on the north side of the street or stopping their car and walking their student to the school outside of a marked crosswalk.
- Speeding along 7<sup>th</sup> Avenue was observed directly before and after pick-up and drop-off periods.
- Parents were observed dropping off and picking up students along Olivehurst. Often, those students did not use the marked crosswalks at the intersection, but crossed mid-block.
- Several students were observed running through the intersection or along sidewalks and unpaved shoulders to reach the school.
- Temporary school zone signage within the parking lot helped direct traffic and stop parking within crosswalks.

## Yuba Coalition Meetings

The Yuba Safe Routes to School Coalition includes members and staff from local law enforcement agencies, fire departments, public health agencies, schools, city planning and engineering departments and other stakeholder groups and departments. Coalition meetings have been vital in developing an understanding of the built and social environments around Ella Elementary School.

## Meetings with Law Enforcement

On November 5, 2014, WALKSacramento Staff met with a California Highway Patrol Officer to discuss common traffic violations and reported complaints around Ella Elementary School. According to Officer Jodie Beck, speeding, jaywalking, partial stops at intersections, and reckless driving are common issues around the school. Information from that meeting as well as conversations with local law enforcement during the Yuba Coalition Meeting have helped shape the recommendations made in this report.

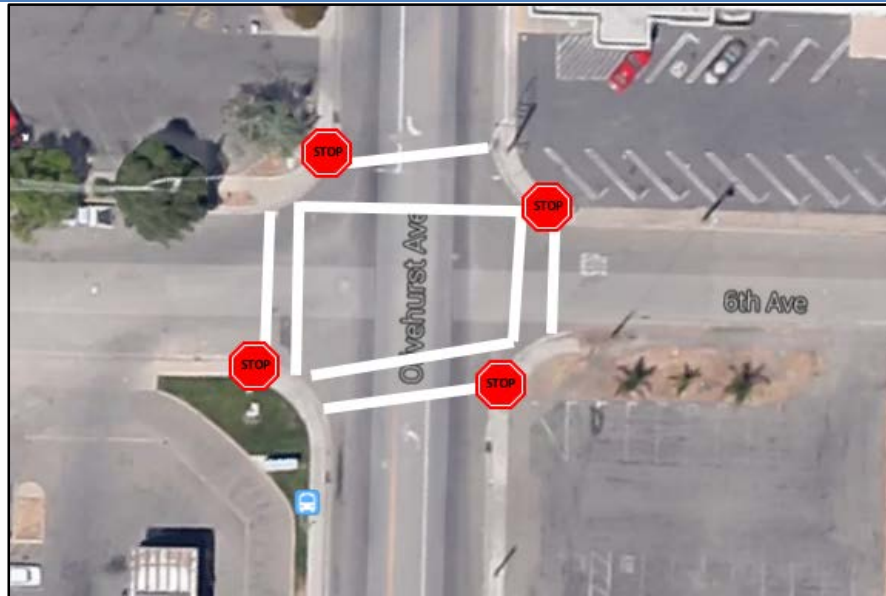


## INFRASTRUCTURE RECOMMENDATIONS

The following recommendations apply to both the Marysville Joint Unified School District and Yuba County. The recommendations are in order of priority as determined by members of the Yuba Coalition including staff from: Ella Elementary, Child Support Services, the Olivehurst Fire Department, The Yuba County Sheriff's department, The Marysville Joint Unified School District's Facilities Department, and the County Health Department.

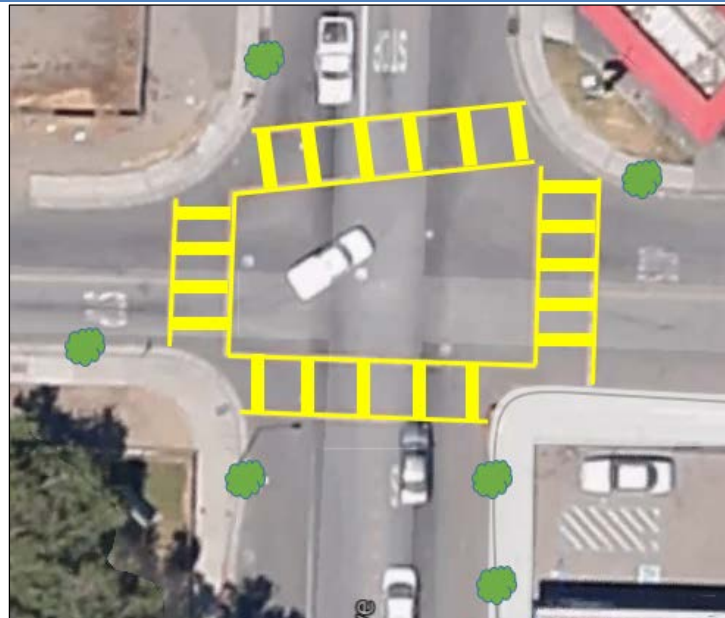
ID	Location	Recommendation	Justification
1	Intersection of 6 <sup>th</sup> Ave. and Olivehurst Ave.	<ul style="list-style-type: none"><li>• Restripe all crosswalks and include one on the Western side of Olivehurst across 6<sup>th</sup> Avenue. Often this stop sign is ignored because of the lack of striping.</li><li>• Make this intersection a 4-way stop to slow traffic along Olivehurst Avenue.</li></ul>	<ul style="list-style-type: none"><li>• Several students and parents cross this intersection on their way to and from school. The crosswalk striping at this intersection has almost completely worn off. Many residents in Olivehurst are seemingly unaware of the existence of striped crosswalks at this intersection as evidenced by the number of vehicles observed stopping in the middle of the crosswalks. In our initial Walk Audit review meeting, restriping this intersection and making it an all way stop was the number one priority.</li><li>• Making this intersection an all-way stop will allow for pedestrians to comfortably cross the street at all legs. There are many nearby destinations that could be accessed on foot.</li></ul>

### Visual



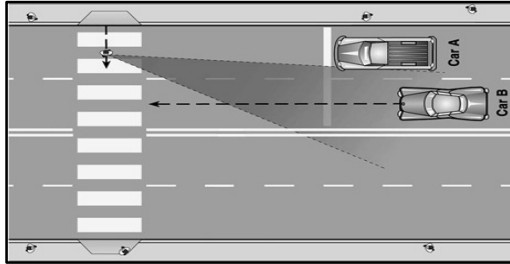
ID	Location	Recommendation	Justification
2	Intersection of 7 <sup>th</sup> Ave. and Olivehurst Ave.	<ul style="list-style-type: none"> <li>• Restripe the crosswalk with high visibility markings, restripe the STOP lettering.</li> <li>• Build a paved corner on the south eastern corner of the intersection.</li> <li>• Landscape the intersection to reduce glare</li> </ul>	<ul style="list-style-type: none"> <li>• The crosswalks and stop lines at this intersection are faded making the proper stopping and crossing locations unclear for drivers and pedestrians. During the traffic observation exercise, several vehicles were observed stopping in the middle of the crosswalk. Restriping will help alleviate this issue.</li> <li>• Wide, paved street corners slow traffic as they round corners while providing pedestrians with more room to stand when waiting to cross. Currently, with no paved corner at this location, drivers will cut the corner or make the turn at a high speeds. Due to the lack of paving, pedestrians are below grade, potentially putting them outside of a motorist's field of vision.</li> <li>• Landscaping at this intersection and along 7<sup>th</sup> and Olivehurst Avenue will reduce potential conflicts between pedestrians, cyclists, and motorists who can be blinded by sunlight during pick-up and drop-off periods.</li> </ul>

#### Visual



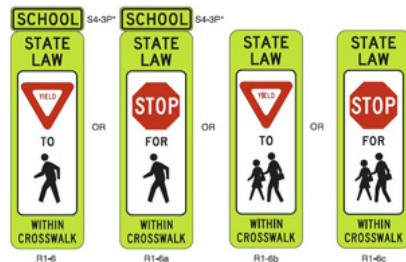
ID	Location	Recommendation	Justification
3	Intersection of 7 <sup>th</sup> Ave. and Olivehurst Ave.	<ul style="list-style-type: none"> <li>Install advanced stop lines augmented by informational signage</li> </ul>	<ul style="list-style-type: none"> <li>Advanced stop lines require drivers to stop further away from a crosswalk, promoting increased visibility between pedestrians and motorists. The turn lane on Olivehurst Avenue effectively creates a multi-lane crossing. These crossings can be dangerous as the pedestrian may be hidden from view from a car approaching the intersection in a center lane. Additional signage informing the correct location to stop will help ensure compliance with the new stop location.</li> </ul>

#### Visual



ID	Location	Recommendation	Justification
4	South of 7 <sup>th</sup> and Olivehurst Intersection traveling Northbound	<ul style="list-style-type: none"> <li>Paint a "SCHOOL" warning on the northbound leg to further encourage drivers to slow to a complete stop at the intersection of Olivehurst and 7<sup>th</sup></li> <li>Install additional signs that indicate pedestrian presence and the school speed zone</li> </ul>	<ul style="list-style-type: none"> <li>Pedestrian and school zone signage has been proven effective in reducing speeds and improving driver attentiveness around schools. The California Manual on Traffic Control Devices (MUTCD) allows signage that shows school children, specifying that not stopping for pedestrians is a crime. Crossing guards at Ella Elementary have noted that drivers often fail to stop for pedestrians or attempt to drive around crossing guards.</li> </ul>

#### Visual



ID	Location	Recommendation	Justification
5	Bus Stops north of 7 <sup>th</sup> and Olivehurst intersection	<ul style="list-style-type: none"> <li>Sweep and clean the bus stops on either side of the street.</li> <li>Install pedestrian oriented lighting, seating, and overhead shelters at both locations.</li> </ul>	<ul style="list-style-type: none"> <li>These bus stops are dirty, unsheltered, and under lit. To encourage more transit use and to create a more attractive walking environment, pedestrian amenities such as overhangs, benches, and lighting should be installed. Pedestrian scaled lighting will improve security in this community.</li> </ul>

#### Visual





ID	Location	Recommendation	Justification
6	Between of 6 <sup>th</sup> Ave. and 7 <sup>th</sup> Ave. across Olivehurst Ave.	<ul style="list-style-type: none"> <li>Install a mid-block pedestrian crossing with pedestrian actuated signals that alert drivers to stop for pedestrians</li> </ul>	<ul style="list-style-type: none"> <li>Pedestrians were observed crossing midblock at this location during the walk audit and traffic observations. There are no crossings between 6<sup>th</sup> and 7<sup>th</sup> Avenues even though this span of Olivehurst Ave is nearly 1,000 feet long. A pedestrian actuated signal that alerts drivers to stop will best accommodate safe crossings. Furthermore, because the length of Olivehurst between 6<sup>th</sup> and 7<sup>th</sup> Avenues is unimpeded, drivers often approach the intersection at 7<sup>th</sup> Avenue with great speed, endangering students crossing near the school.</li> </ul>

## Visual



ID	Location	Recommendation	Justification
7	7 <sup>th</sup> Avenue	<ul style="list-style-type: none"> <li>Install sidewalks along the north side of 7<sup>th</sup> Avenue west of Olivehurst Avenue.</li> </ul>	<ul style="list-style-type: none"> <li>Sidewalks along the northern leg of 7<sup>th</sup> street, especially north of the School would encourage pedestrian activity, increase safety, and support active students. The sidewalk coming down north from Olivehurst Avenue ends abruptly on 7<sup>th</sup> Avenue. Continue this sidewalk. There is ample room on the shoulder to do so.</li> </ul>

#### Visual



ID	Location	Recommendation	Justification
8	North of 7 <sup>th</sup> and Olivehurst Intersection along Olivehurst Avenue	<ul style="list-style-type: none"> <li>Install protected bike lanes along Olivehurst Avenue leading to and from Ella Elementary School</li> </ul>	<ul style="list-style-type: none"> <li>Olivehurst does not currently support biking with bicycle infrastructure. Students and community members currently ride unprotected in the street or on sidewalks placing both themselves and pedestrians in danger. Bike lanes will help support safe bicycling by providing a well-identified space to ride and reducing traffic lane widths. Narrowed lane widths have been shown to reduce vehicular traffic speeds.</li> </ul>

#### Visual



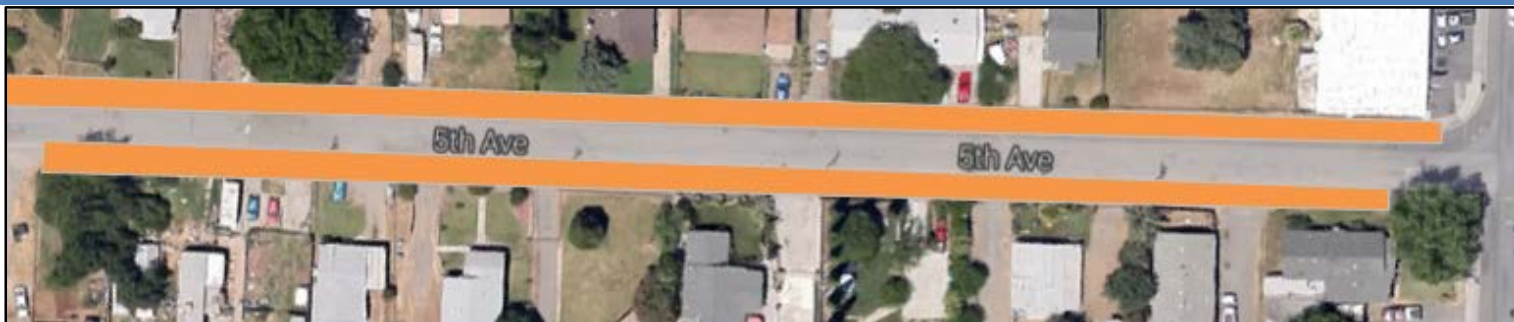
ID	Location	Recommendation	Justification
9	Intersection of 5 <sup>th</sup> Ave. and Olivehurst Ave.	<ul style="list-style-type: none"> <li>Restripe crosswalks at the intersection of 5<sup>th</sup> Ave. and Olivehurst Avenue.</li> </ul>	<ul style="list-style-type: none"> <li>Currently, these crosswalks are barely visible. Crosswalks should alert a driver to the presence of pedestrians with bright roadway markings.</li> </ul>

#### Visual



ID	Location	Recommendation	Justification
10	5 <sup>th</sup> Avenue	<ul style="list-style-type: none"> <li>Install sidewalks</li> </ul>	<ul style="list-style-type: none"> <li>Utility poles, drainage ditches, and parked cars are barriers to students walking to school along 5<sup>th</sup> Avenue. Sidewalks will narrow the site line of drivers who tend to speed down these residential streets.</li> </ul>

#### Visual



ID	Location	Recommendation	Justification
11	Western Avenue	<ul style="list-style-type: none"> <li>Repave Western Avenue between 5<sup>th</sup> street and 7<sup>th</sup> street.</li> <li>Install Sidewalks</li> </ul>	<ul style="list-style-type: none"> <li>Large ditches pose a threat to students walking to and from school. The cracked roadway has displaced great amounts of debris to the shoulder of the Avenue causing pedestrians to travel in the right of way to avoid them. The lack of sidewalk causes pedestrians to have to walk on either loose gravel over potholes or along soupy mud in the winter.</li> </ul>

#### Visual



ID	Location	Recommendation	Justification
12	Intersection of Tulsa Ave and 7 <sup>th</sup> Ave	<ul style="list-style-type: none"> <li>Repaint the crosswalk at the intersection of Tulsa Avenue and 7<sup>th</sup> Avenue with a high visibility ladder or zebra style crosswalk.</li> </ul>	<ul style="list-style-type: none"> <li>There is no safe or convenient location from pedestrians to cross 7<sup>th</sup> Street to access the School. A crosswalk was once located at this intersection but has since been paved over. 7<sup>th</sup> Avenue can be dangerous to cross at times. A crosswalk would funnel groups of pedestrians to a single crossing locations and help alert drivers to the presence of pedestrians.</li> </ul>



## **General recommendations:**

The following general recommendations apply to both the Marysville Joint Unified School District and Yuba County.

### **Lighting**

Lighting throughout the community must be addressed in order to ensure safe routes to school in Olivehurst. Several lights have been identified by parents and walk audit participants as being out of commission. Adequate street lighting is a crucial safety component for all modes of transportation. WALKSacramento recommends fixing the lighting throughout the community and performing regular maintenance of streetlights around the school.

### **Neighborhood Outreach**

A significant barrier and threat to students walking and biking to school, especially along Western Avenue are aggressive dogs and poor maintenance of bushes and trees. On several occasions during the walk audit aggressive dogs charged the fence. Frightened students will often jump away from a fence into the middle of the street, placing them in danger of an oncoming vehicle. Unkempt shrubs, trees, and cacti also create a barrier for pedestrians. Community members should be contacted about keeping their dogs inside or in the backyard during commute times and about maintaining their yards.

A great way to ensure student safety is to have “eyes-on-the-street.” Consistent surveillance of a roadway creates a sense of familiarity and safety for children traveling to school. Community members should be contacted about performing outdoor activities such as mowing the lawn, walking their dog, or simply being outside to ensure surveillance of the roadway as students make their way to and from school.

### **Walking School Bus**

Due to concerns ranging including sexual predators, a lack of sidewalks and bike lanes, and speeding traffic, a walking school bus or bike train should be established. Walking school busses are groups of students who meet at a determined location to be led to school by a parent or teacher volunteer. Bike trains do the same for students on bicycles. Safety in numbers is a key concept and proven method within Safe Routes to School programs.

### **Law Enforcement**

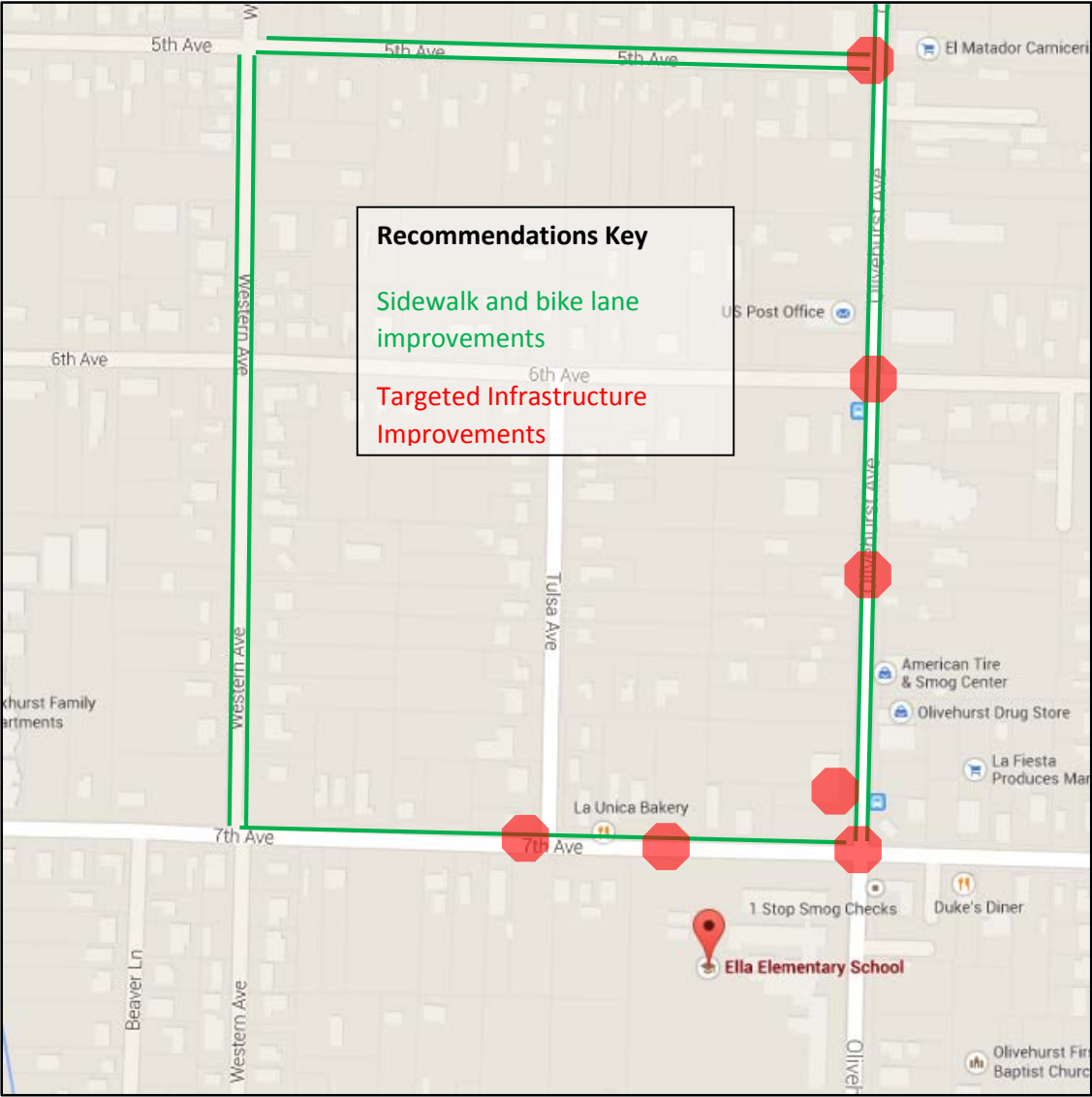
Due to concerns about sexual predators, crime, and unsafe driving habits, increased presence of law enforcement during commute times may improve the sense of safety in the community and thus the likelihood that a student walks or bikes to school. Either CHP or local law enforcement and law enforcement volunteers (the STARS program) may consider drive throughs of the community and parking lot during commute times to reinforce proper driving behavior and provide additional surveillance of nearby neighborhoods.

### **Walking School Bus**

A great opportunity exists to start a walking school bus at Ella Elementary School. Walking school busses are groups of children who walk to school together, usually with a parent or teacher. The program can be as informal as a few families offering to take turns walking the group to school or as a school sponsored weekly walking group. To start the program, inform regular and potential walkers of a convenient meeting place and designate an adult to facilitate the walk to school. An alternative to the walking school bus is a bicycle train.



MAP OF IDENTIFICATIONS:





## APPENDIX A: National Center for Safe Routes to School Parent Survey Form

Parent Survey About Walking and Biking to School																	
<p><b>Dear Parent or Caregiver,</b>            Your child's school wants to learn your thoughts about children walking and biking to school. This survey will take about 5 - 10 minutes to complete. We ask that each family complete only one survey per school your children attend. If more than one child from a school brings a survey home, please fill out the survey for the child with the next birthday from today's date.</p> <p>After you have completed this survey, send it back to the school with your child or give it to the teacher. Your responses will be kept confidential and neither your name nor your child's name will be associated with any results.</p> <p><b>Thank you for participating in this survey!</b></p>																	
+ CAPITAL LETTERS ONLY – BLUE OR BLACK INK ONLY +																	
School Name: <span style="border: 1px solid black; display: inline-block; width: 300px; height: 1.2em; vertical-align: middle;"></span>																	
<p>1. What is the grade of the child who brought home this survey? <span style="border: 1px solid black; display: inline-block; width: 20px; height: 1.2em; vertical-align: middle;"></span> Grade (PK,K,1,2,3...)</p>																	
<p>2. Is the child who brought home this survey male or female? <span style="border: 1px solid black; display: inline-block; width: 15px; height: 1.2em; vertical-align: middle;"></span> Male <span style="border: 1px solid black; display: inline-block; width: 15px; height: 1.2em; vertical-align: middle;"></span> Female</p>																	
<p>3. How many children do you have in Kindergarten through 8<sup>th</sup> grade? <span style="border: 1px solid black; display: inline-block; width: 20px; height: 1.2em; vertical-align: middle;"></span></p>																	
<p>4. What is the street intersection nearest your home? (Provide the names of two intersecting streets)</p> <div style="border: 1px solid black; display: inline-block; width: 300px; height: 1.2em; vertical-align: middle;"></div> <p style="text-align: center; margin-top: 5px;">and</p> <div style="border: 1px solid black; display: inline-block; width: 300px; height: 1.2em; vertical-align: middle;"></div>																	
Place a clear 'X' inside box. If you make a mistake, fill the entire box, and then mark the correct box.																	
<p>5. How far does your child live from school?</p> <div style="display: flex; justify-content: space-between;"> <div> <input type="checkbox"/> Less than ¼ mile           </div> <div> <input type="checkbox"/> ½ mile up to 1 mile           </div> <div> <input type="checkbox"/> More than 2 miles           </div> </div> <div style="display: flex; justify-content: space-between;"> <div> <input type="checkbox"/> ¼ mile up to ½ mile           </div> <div> <input type="checkbox"/> 1 mile up to 2 miles           </div> <div> <input type="checkbox"/> Don't know           </div> </div>																	
Place a clear 'X' inside box. If you make a mistake, fill the entire box, and then mark the correct box. +																	
<p>6. On most days, how does your child arrive and leave for school? (Select one choice per column, mark box with X)</p> <table style="width: 100%; border-collapse: collapse;"> <thead> <tr> <th style="text-align: left; border-bottom: 1px solid black;">Arrive at school</th> <th style="text-align: left; border-bottom: 1px solid black;">Leave from school</th> </tr> </thead> <tbody> <tr> <td><input type="checkbox"/> Walk</td> <td><input type="checkbox"/> Walk</td> </tr> <tr> <td><input type="checkbox"/> Bike</td> <td><input type="checkbox"/> Bike</td> </tr> <tr> <td><input type="checkbox"/> School Bus</td> <td><input type="checkbox"/> School Bus</td> </tr> <tr> <td><input type="checkbox"/> Family vehicle (only children in your family)</td> <td><input type="checkbox"/> Family vehicle (only children in your family)</td> </tr> <tr> <td><input type="checkbox"/> Carpool (Children from other families)</td> <td><input type="checkbox"/> Carpool (Children from other families)</td> </tr> <tr> <td><input type="checkbox"/> Transit (city bus, subway, etc.)</td> <td><input type="checkbox"/> Transit (city bus, subway, etc.)</td> </tr> <tr> <td><input type="checkbox"/> Other (skateboard, scooter, inline skates, etc.)</td> <td><input type="checkbox"/> Other (skateboard, scooter, inline skates, etc.)</td> </tr> </tbody> </table>		Arrive at school	Leave from school	<input type="checkbox"/> Walk	<input type="checkbox"/> Walk	<input type="checkbox"/> Bike	<input type="checkbox"/> Bike	<input type="checkbox"/> School Bus	<input type="checkbox"/> School Bus	<input type="checkbox"/> Family vehicle (only children in your family)	<input type="checkbox"/> Family vehicle (only children in your family)	<input type="checkbox"/> Carpool (Children from other families)	<input type="checkbox"/> Carpool (Children from other families)	<input type="checkbox"/> Transit (city bus, subway, etc.)	<input type="checkbox"/> Transit (city bus, subway, etc.)	<input type="checkbox"/> Other (skateboard, scooter, inline skates, etc.)	<input type="checkbox"/> Other (skateboard, scooter, inline skates, etc.)
Arrive at school	Leave from school																
<input type="checkbox"/> Walk	<input type="checkbox"/> Walk																
<input type="checkbox"/> Bike	<input type="checkbox"/> Bike																
<input type="checkbox"/> School Bus	<input type="checkbox"/> School Bus																
<input type="checkbox"/> Family vehicle (only children in your family)	<input type="checkbox"/> Family vehicle (only children in your family)																
<input type="checkbox"/> Carpool (Children from other families)	<input type="checkbox"/> Carpool (Children from other families)																
<input type="checkbox"/> Transit (city bus, subway, etc.)	<input type="checkbox"/> Transit (city bus, subway, etc.)																
<input type="checkbox"/> Other (skateboard, scooter, inline skates, etc.)	<input type="checkbox"/> Other (skateboard, scooter, inline skates, etc.)																
+ Place a clear 'X' inside box. If you make a mistake, fill the entire box, and then mark the correct box. +																	
<p>7. How long does it normally take your child to get to/from school? (Select one choice per column, mark box with X)</p> <table style="width: 100%; border-collapse: collapse;"> <thead> <tr> <th style="text-align: left; border-bottom: 1px solid black;">Travel time to school</th> <th style="text-align: left; border-bottom: 1px solid black;">Travel time from school</th> </tr> </thead> <tbody> <tr> <td><input type="checkbox"/> Less than 5 minutes</td> <td><input type="checkbox"/> Less than 5 minutes</td> </tr> <tr> <td><input type="checkbox"/> 5 – 10 minutes</td> <td><input type="checkbox"/> 5 – 10 minutes</td> </tr> <tr> <td><input type="checkbox"/> 11 – 20 minutes</td> <td><input type="checkbox"/> 11 – 20 minutes</td> </tr> <tr> <td><input type="checkbox"/> More than 20 minutes</td> <td><input type="checkbox"/> More than 20 minutes</td> </tr> <tr> <td><input type="checkbox"/> Don't know / Not sure</td> <td><input type="checkbox"/> Don't know / Not sure</td> </tr> </tbody> </table>		Travel time to school	Travel time from school	<input type="checkbox"/> Less than 5 minutes	<input type="checkbox"/> Less than 5 minutes	<input type="checkbox"/> 5 – 10 minutes	<input type="checkbox"/> 5 – 10 minutes	<input type="checkbox"/> 11 – 20 minutes	<input type="checkbox"/> 11 – 20 minutes	<input type="checkbox"/> More than 20 minutes	<input type="checkbox"/> More than 20 minutes	<input type="checkbox"/> Don't know / Not sure	<input type="checkbox"/> Don't know / Not sure				
Travel time to school	Travel time from school																
<input type="checkbox"/> Less than 5 minutes	<input type="checkbox"/> Less than 5 minutes																
<input type="checkbox"/> 5 – 10 minutes	<input type="checkbox"/> 5 – 10 minutes																
<input type="checkbox"/> 11 – 20 minutes	<input type="checkbox"/> 11 – 20 minutes																
<input type="checkbox"/> More than 20 minutes	<input type="checkbox"/> More than 20 minutes																
<input type="checkbox"/> Don't know / Not sure	<input type="checkbox"/> Don't know / Not sure																
+ +																	

+ +																									
<p>8. Has your child asked you for permission to walk or bike to/from school in the last year? <span style="border: 1px solid black; display: inline-block; width: 20px; height: 1.2em; vertical-align: middle;"></span> Yes <span style="border: 1px solid black; display: inline-block; width: 20px; height: 1.2em; vertical-align: middle;"></span> No</p>																									
<p>9. At what grade would you allow your child to walk or bike to/from school without an adult?            (Select a grade between PK,K,1,2,3...) <span style="border: 1px solid black; display: inline-block; width: 20px; height: 1.2em; vertical-align: middle;"></span> grade (or) <span style="border: 1px solid black; display: inline-block; width: 20px; height: 1.2em; vertical-align: middle;"></span> I would not feel comfortable at any grade</p>																									
Place a clear 'X' inside box. If you make a mistake, fill the entire box, and then mark the correct box																									
<p>10. What of the following issues affected your decision to allow, or not allow, your child to walk or bike to/from school? (Select ALL that apply)</p> <table style="width: 100%; border-collapse: collapse;"> <tbody> <tr> <td><input type="checkbox"/> Distance.....</td> <td><input type="checkbox"/> My child already walks or bikes to/from school</td> </tr> <tr> <td><input type="checkbox"/> Convenience of driving.....</td> <td><input type="checkbox"/> Yes <input type="checkbox"/> No <input type="checkbox"/> Not Sure</td> </tr> <tr> <td><input type="checkbox"/> Time.....</td> <td><input type="checkbox"/> Yes <input type="checkbox"/> No <input type="checkbox"/> Not Sure</td> </tr> <tr> <td><input type="checkbox"/> Child's before or after-school activities.....</td> <td><input type="checkbox"/> Yes <input type="checkbox"/> No <input type="checkbox"/> Not Sure</td> </tr> <tr> <td><input type="checkbox"/> Speed of traffic along route.....</td> <td><input type="checkbox"/> Yes <input type="checkbox"/> No <input type="checkbox"/> Not Sure</td> </tr> <tr> <td><input type="checkbox"/> Amount of traffic along route.....</td> <td><input type="checkbox"/> Yes <input type="checkbox"/> No <input type="checkbox"/> Not Sure</td> </tr> <tr> <td><input type="checkbox"/> Adults to walk or bike with.....</td> <td><input type="checkbox"/> Yes <input type="checkbox"/> No <input type="checkbox"/> Not Sure</td> </tr> <tr> <td><input type="checkbox"/> Sidewalks or pathways.....</td> <td><input type="checkbox"/> Yes <input type="checkbox"/> No <input type="checkbox"/> Not Sure</td> </tr> <tr> <td><input type="checkbox"/> Safety of intersections and crossings.....</td> <td><input type="checkbox"/> Yes <input type="checkbox"/> No <input type="checkbox"/> Not Sure</td> </tr> <tr> <td><input type="checkbox"/> Crossing guards.....</td> <td><input type="checkbox"/> Yes <input type="checkbox"/> No <input type="checkbox"/> Not Sure</td> </tr> <tr> <td><input type="checkbox"/> Violence or crime.....</td> <td><input type="checkbox"/> Yes <input type="checkbox"/> No <input type="checkbox"/> Not Sure</td> </tr> <tr> <td><input type="checkbox"/> Weather or climate.....</td> <td><input type="checkbox"/> Yes <input type="checkbox"/> No <input type="checkbox"/> Not Sure</td> </tr> </tbody> </table>		<input type="checkbox"/> Distance.....	<input type="checkbox"/> My child already walks or bikes to/from school	<input type="checkbox"/> Convenience of driving.....	<input type="checkbox"/> Yes <input type="checkbox"/> No <input type="checkbox"/> Not Sure	<input type="checkbox"/> Time.....	<input type="checkbox"/> Yes <input type="checkbox"/> No <input type="checkbox"/> Not Sure	<input type="checkbox"/> Child's before or after-school activities.....	<input type="checkbox"/> Yes <input type="checkbox"/> No <input type="checkbox"/> Not Sure	<input type="checkbox"/> Speed of traffic along route.....	<input type="checkbox"/> Yes <input type="checkbox"/> No <input type="checkbox"/> Not Sure	<input type="checkbox"/> Amount of traffic along route.....	<input type="checkbox"/> Yes <input type="checkbox"/> No <input type="checkbox"/> Not Sure	<input type="checkbox"/> Adults to walk or bike with.....	<input type="checkbox"/> Yes <input type="checkbox"/> No <input type="checkbox"/> Not Sure	<input type="checkbox"/> Sidewalks or pathways.....	<input type="checkbox"/> Yes <input type="checkbox"/> No <input type="checkbox"/> Not Sure	<input type="checkbox"/> Safety of intersections and crossings.....	<input type="checkbox"/> Yes <input type="checkbox"/> No <input type="checkbox"/> Not Sure	<input type="checkbox"/> Crossing guards.....	<input type="checkbox"/> Yes <input type="checkbox"/> No <input type="checkbox"/> Not Sure	<input type="checkbox"/> Violence or crime.....	<input type="checkbox"/> Yes <input type="checkbox"/> No <input type="checkbox"/> Not Sure	<input type="checkbox"/> Weather or climate.....	<input type="checkbox"/> Yes <input type="checkbox"/> No <input type="checkbox"/> Not Sure
<input type="checkbox"/> Distance.....	<input type="checkbox"/> My child already walks or bikes to/from school																								
<input type="checkbox"/> Convenience of driving.....	<input type="checkbox"/> Yes <input type="checkbox"/> No <input type="checkbox"/> Not Sure																								
<input type="checkbox"/> Time.....	<input type="checkbox"/> Yes <input type="checkbox"/> No <input type="checkbox"/> Not Sure																								
<input type="checkbox"/> Child's before or after-school activities.....	<input type="checkbox"/> Yes <input type="checkbox"/> No <input type="checkbox"/> Not Sure																								
<input type="checkbox"/> Speed of traffic along route.....	<input type="checkbox"/> Yes <input type="checkbox"/> No <input type="checkbox"/> Not Sure																								
<input type="checkbox"/> Amount of traffic along route.....	<input type="checkbox"/> Yes <input type="checkbox"/> No <input type="checkbox"/> Not Sure																								
<input type="checkbox"/> Adults to walk or bike with.....	<input type="checkbox"/> Yes <input type="checkbox"/> No <input type="checkbox"/> Not Sure																								
<input type="checkbox"/> Sidewalks or pathways.....	<input type="checkbox"/> Yes <input type="checkbox"/> No <input type="checkbox"/> Not Sure																								
<input type="checkbox"/> Safety of intersections and crossings.....	<input type="checkbox"/> Yes <input type="checkbox"/> No <input type="checkbox"/> Not Sure																								
<input type="checkbox"/> Crossing guards.....	<input type="checkbox"/> Yes <input type="checkbox"/> No <input type="checkbox"/> Not Sure																								
<input type="checkbox"/> Violence or crime.....	<input type="checkbox"/> Yes <input type="checkbox"/> No <input type="checkbox"/> Not Sure																								
<input type="checkbox"/> Weather or climate.....	<input type="checkbox"/> Yes <input type="checkbox"/> No <input type="checkbox"/> Not Sure																								
+ Place a clear 'X' inside box. If you make a mistake, fill the entire box, and then mark the correct box																									
<p>11. Would you probably let your child walk or bike to/from school if this problem were changed or improved? (Select one choice per line, mark box with X)</p>																									
<p>12. In your opinion, how much does your child's school encourage or discourage walking and biking to/from school?</p> <div style="display: flex; justify-content: space-between;"> <div> <input type="checkbox"/> Strongly Encourages           </div> <div> <input type="checkbox"/> Encourages           </div> <div> <input type="checkbox"/> Neither           </div> <div> <input type="checkbox"/> Discourages           </div> <div> <input type="checkbox"/> Strongly Discourages           </div> </div>																									
<p>13. How much fun is walking or biking to/from school for your child?</p> <div style="display: flex; justify-content: space-between;"> <div> <input type="checkbox"/> Very Fun           </div> <div> <input type="checkbox"/> Fun           </div> <div> <input type="checkbox"/> Neutral           </div> <div> <input type="checkbox"/> Boring           </div> <div> <input type="checkbox"/> Very Boring           </div> </div>																									
<p>14. How healthy is walking or biking to/from school for your child?</p> <div style="display: flex; justify-content: space-between;"> <div> <input type="checkbox"/> Very Healthy           </div> <div> <input type="checkbox"/> Healthy           </div> <div> <input type="checkbox"/> Neutral           </div> <div> <input type="checkbox"/> Unhealthy           </div> <div> <input type="checkbox"/> Very Unhealthy           </div> </div>																									
+ Place a clear 'X' inside box. If you make a mistake, fill the entire box, and then mark the correct box +																									
<p>15. What is the highest grade or year of school you completed?</p> <div style="display: flex; justify-content: space-between;"> <div> <input type="checkbox"/> Grades 1 through 8 (Elementary)           </div> <div> <input type="checkbox"/> College 1 to 3 years (Some college or technical school)           </div> </div> <div style="display: flex; justify-content: space-between;"> <div> <input type="checkbox"/> Grades 9 through 11 (Some high school)           </div> <div> <input type="checkbox"/> College 4 years or more (College graduate)           </div> </div> <div style="display: flex; justify-content: space-between;"> <div> <input type="checkbox"/> Grade 12 or GED (High school graduate)           </div> <div> <input type="checkbox"/> Prefer not to answer           </div> </div>																									
<p>16. Please provide any additional comments below.</p> <div style="border: 1px solid black; height: 40px; width: 100%;"></div>																									

## APPENDIX B: National Center for Safe Routes to School Travel Tally Form

# Safe Routes to School Students Arrival and Departure Tally Sheet

+
**CAPITAL LETTERS ONLY – BLUE OR BLACK INK ONLY**
+

**School Name:**

**Teacher's First Name:**

**Teacher's Last Name:**

**Grade:** (PK,K,1,2,3,...)  

0

**Monday's Date** (Week count was conducted)  

M

M

D

D

Y

Y

Y

**Number of Students Enrolled in Class:**  

1

- Please conduct these counts on **two** of the following three days **Tuesday, Wednesday, or Thursday.** (Three days would provide better data if counted)
- **Please do not conduct these counts on Mondays or Fridays.**
- Before asking your students to raise their hands, please read through all possible answer choices so they will know their choices. Each Student may only answer once.
- Ask your students as a group the question **"How did you arrive at school today?"**
- Then, reread each answer choice and record the number of students that raised their hands for each. **Place just one character or number in each box.**
- Follow the same procedure for the question **"How do you plan to leave for home after school?"**
- You can conduct the counts once per day but during the count please ask students both the school arrival and departure questions.
- Please conduct this count regardless of weather conditions (i.e., ask these questions on rainy days, too).

**Step 1.**  
Fill in the weather conditions and number of students in each class

**Step 2.**  
**AM – "How did you arrive at school today?"** Record the number of hands for each answer.  
**PM – "How do you plan to leave for home after school?"** Record the number of hands for each answer.

	Weather	Student Tally	Walk	Bike	School Bus	Family Vehicle	Carpool	Transit	Other
<b>Key</b>	S = sunny R = rainy O = overcast SN = snow	Number in class when count made	-	-	-	Only with Children from your family	Riding with children from other families	City bus, subway, etc.	Skate-board, scooter, etc.
Sample AM	S N	2 0	2	3	8	3		3	1
Sample PM	R	1 9	3	3	8	1	2	2	
Tues. AM									
Tues. PM									
Wed. AM									
Wed. PM									
Thurs. AM									
Thurs. PM									
Please list any disruptions to these counts or any unusual travel conditions to/from the school on the days of the tally.									

+

+

DRAFT