



PLANNING FOR ENVIRONMENTAL JUSTICE

KATIE VALENZUELA GARCIA





THE INTERSECTION OF RACE AND LAND USE

INDIAN LAND FOR SALE

GET A HOME
OF
YOUR OWN
EASY PAYMENTS

PERFECT TITLE
POSSESSION
WITHIN
THIRTY DAYS

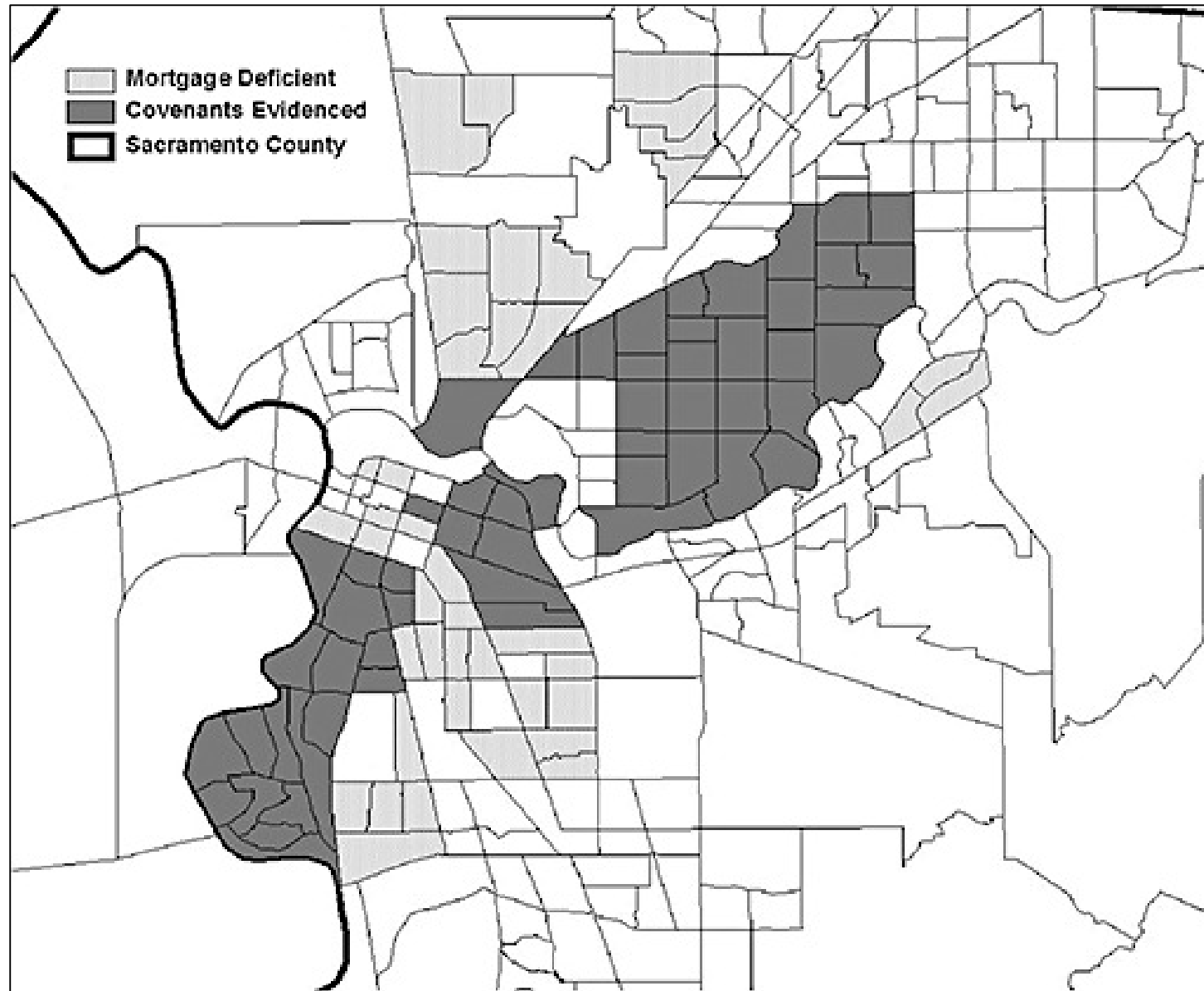
FINE LANDS IN THE WEST
IRRIGATED
IRRIGABLE
GRAZING
AGRICULTURAL
DRY FARMING

IN 1910 THE DEPARTMENT OF THE INTERIOR SOLD UNDER SEALED BIDS ALLOTTED INDIAN LAND AS FOLLOWS:

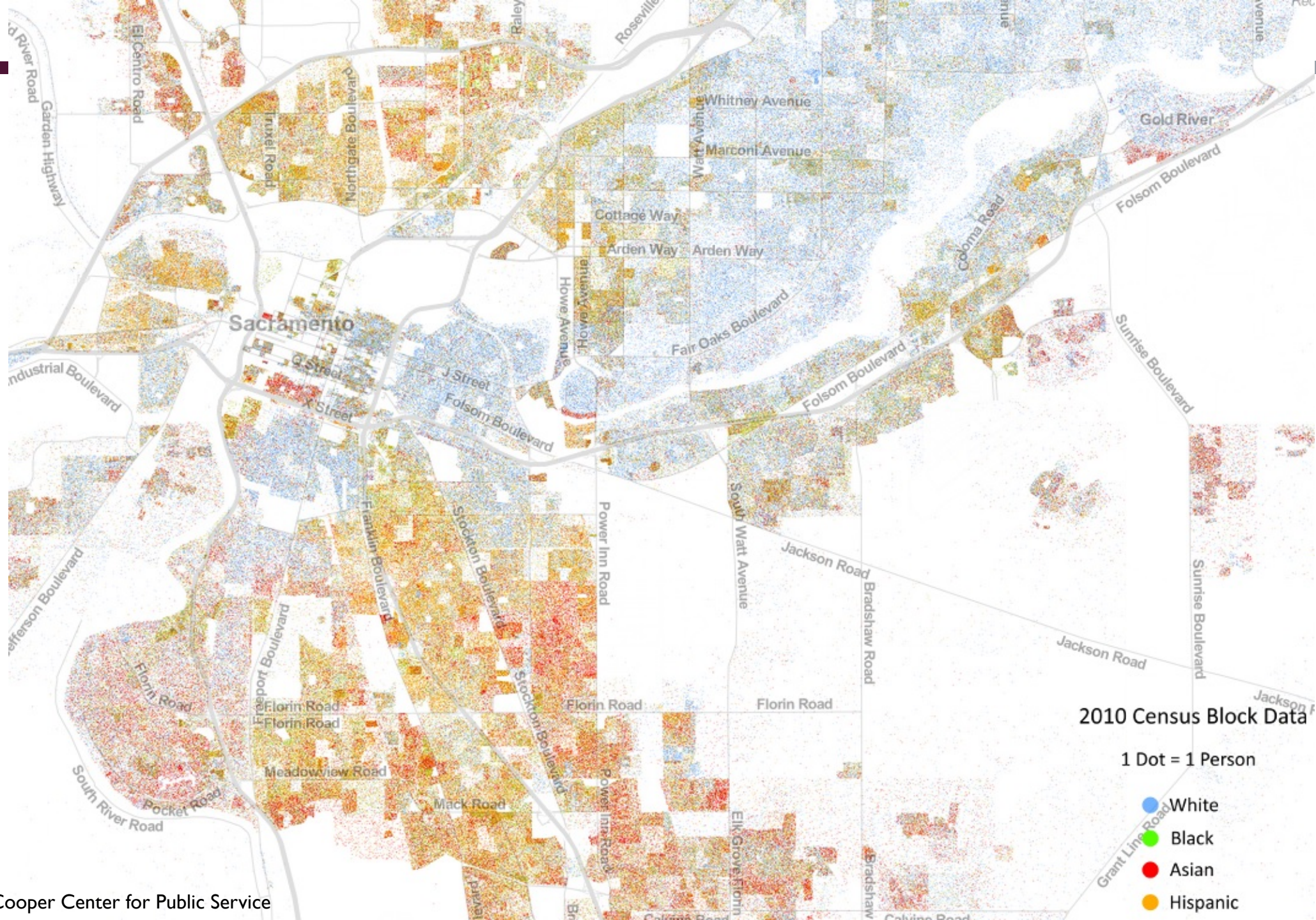
Location	Acres	Average Price per Acre	Location	Acres	Average Price per Acre
<small>001 602 5 12</small>					

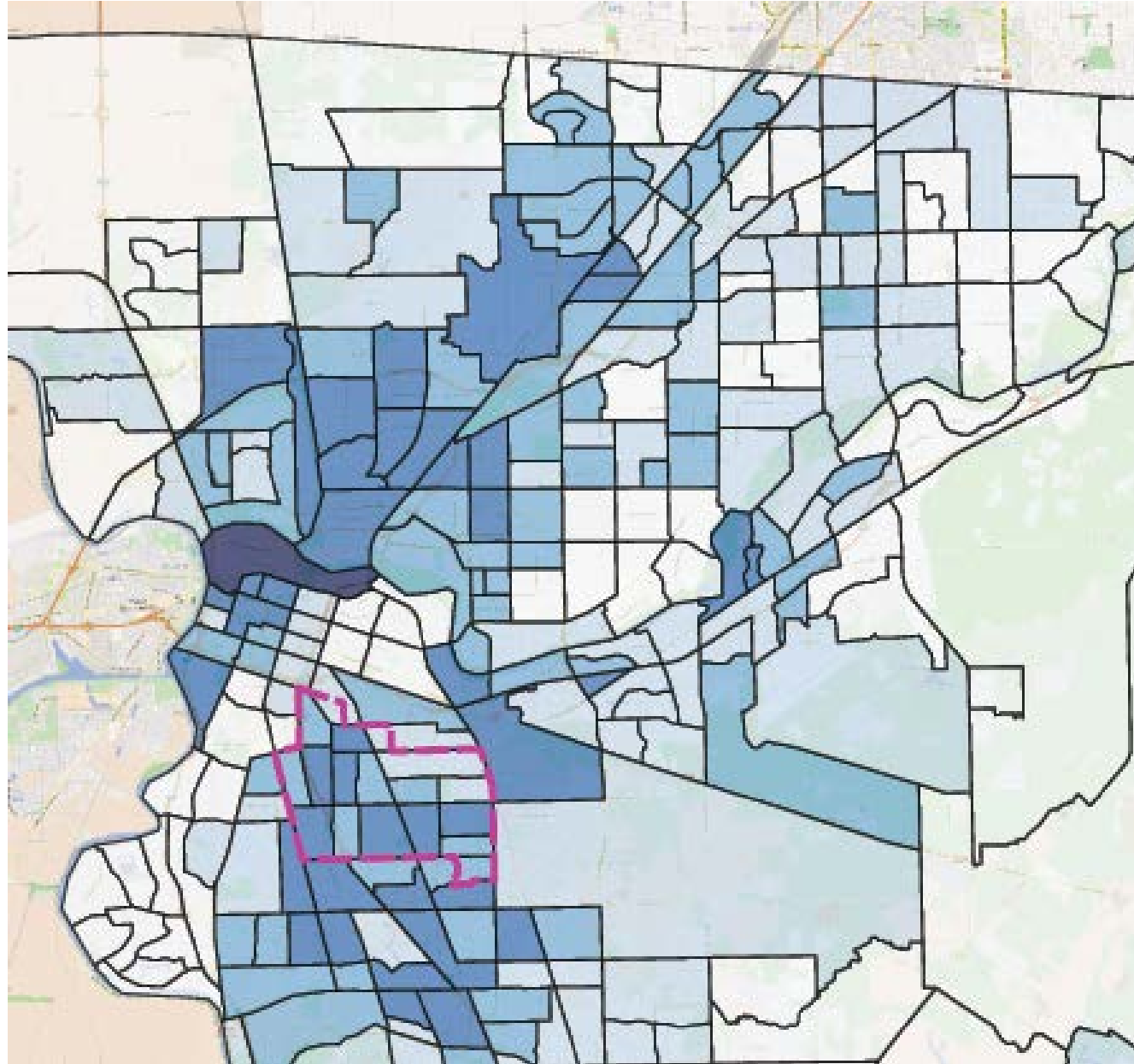
Advertisement - Library of Congress



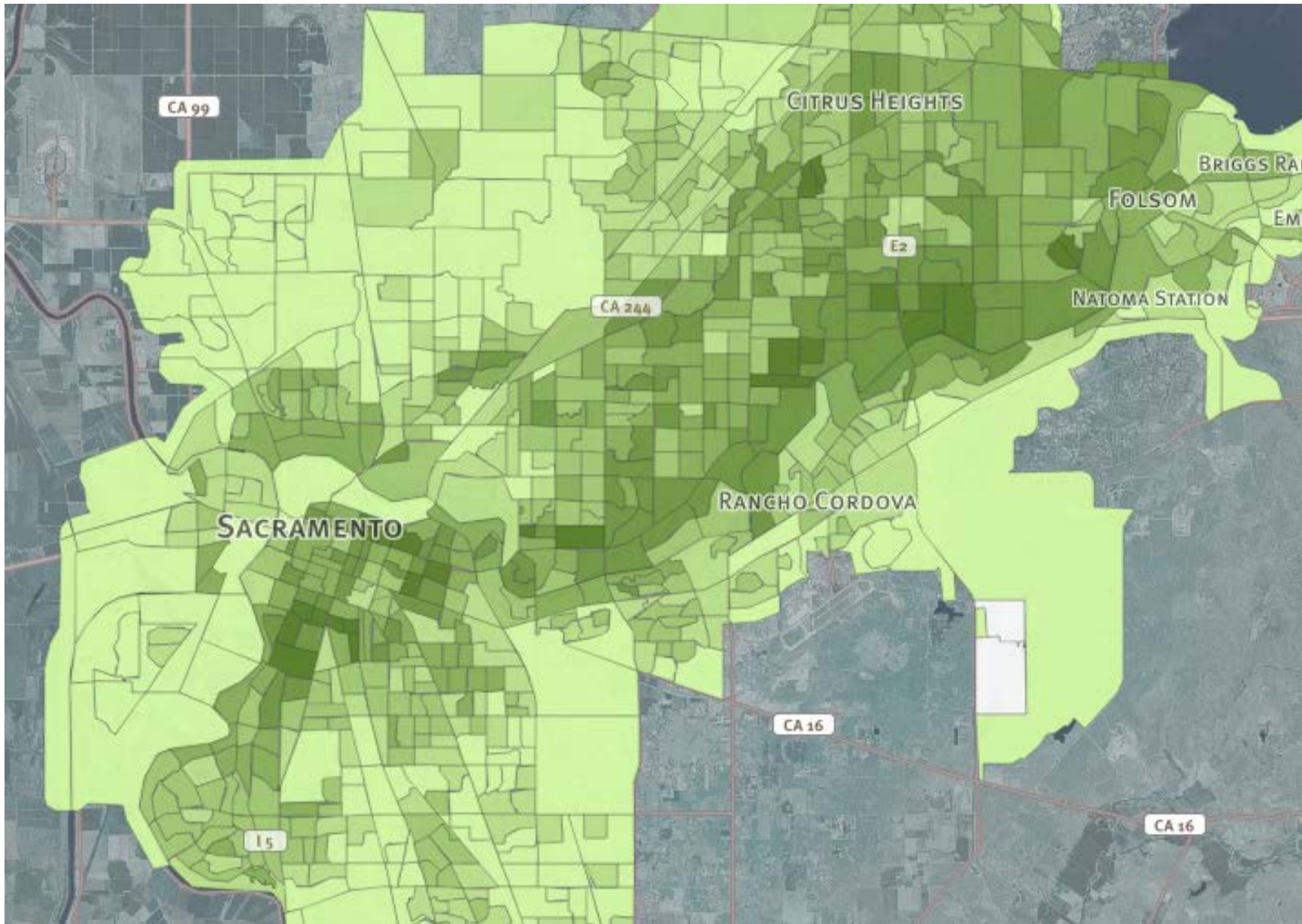


Source: Jesus Hernandez





Source: Human Impact Partners



Source: <http://geosprocket.github.io/sactree-map/#11/38.5777/-121.3684>



CalEnviroScreen 3.0 Results

from OEHHA

CalEnviroScreen Website

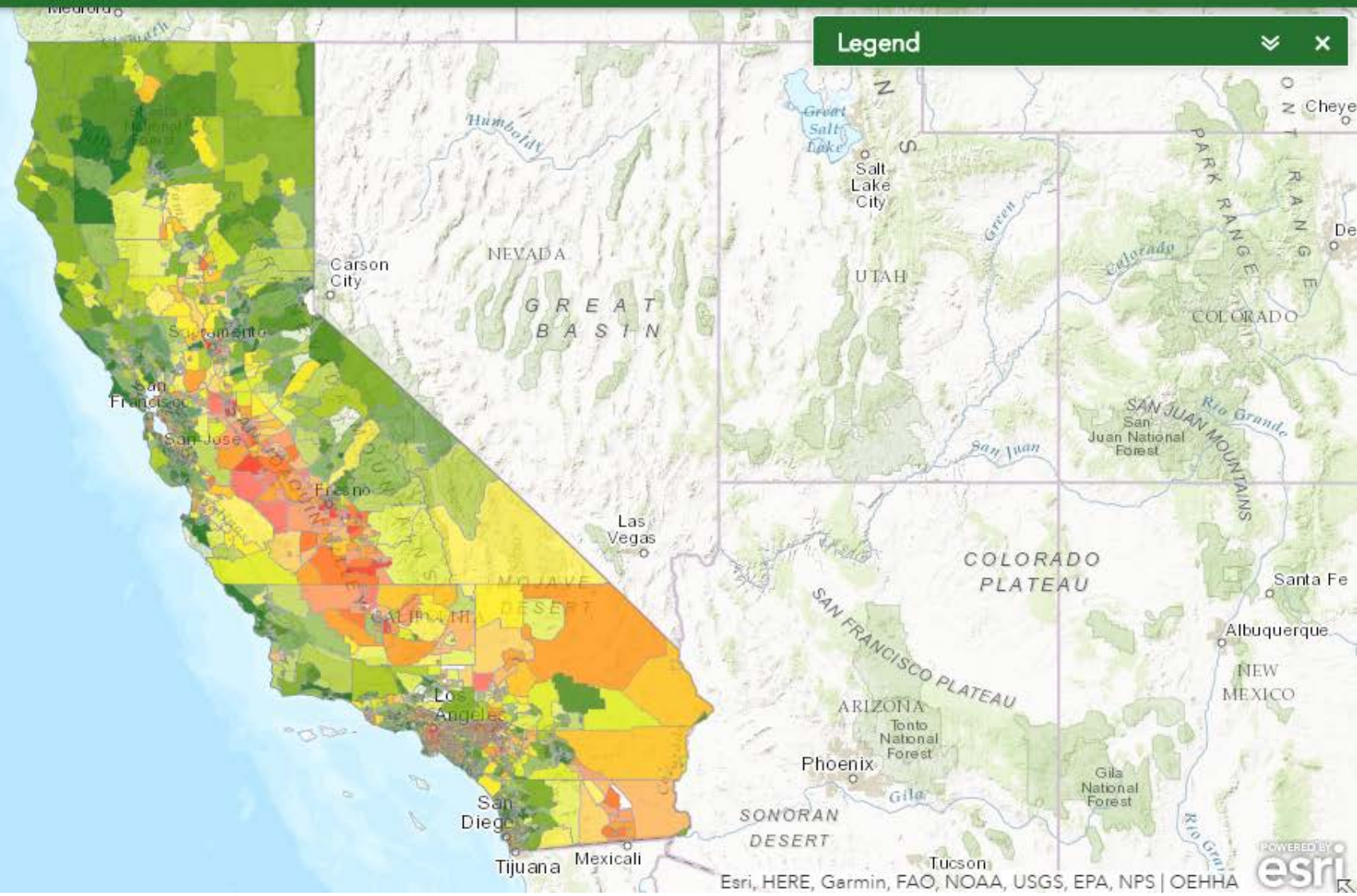


100mi

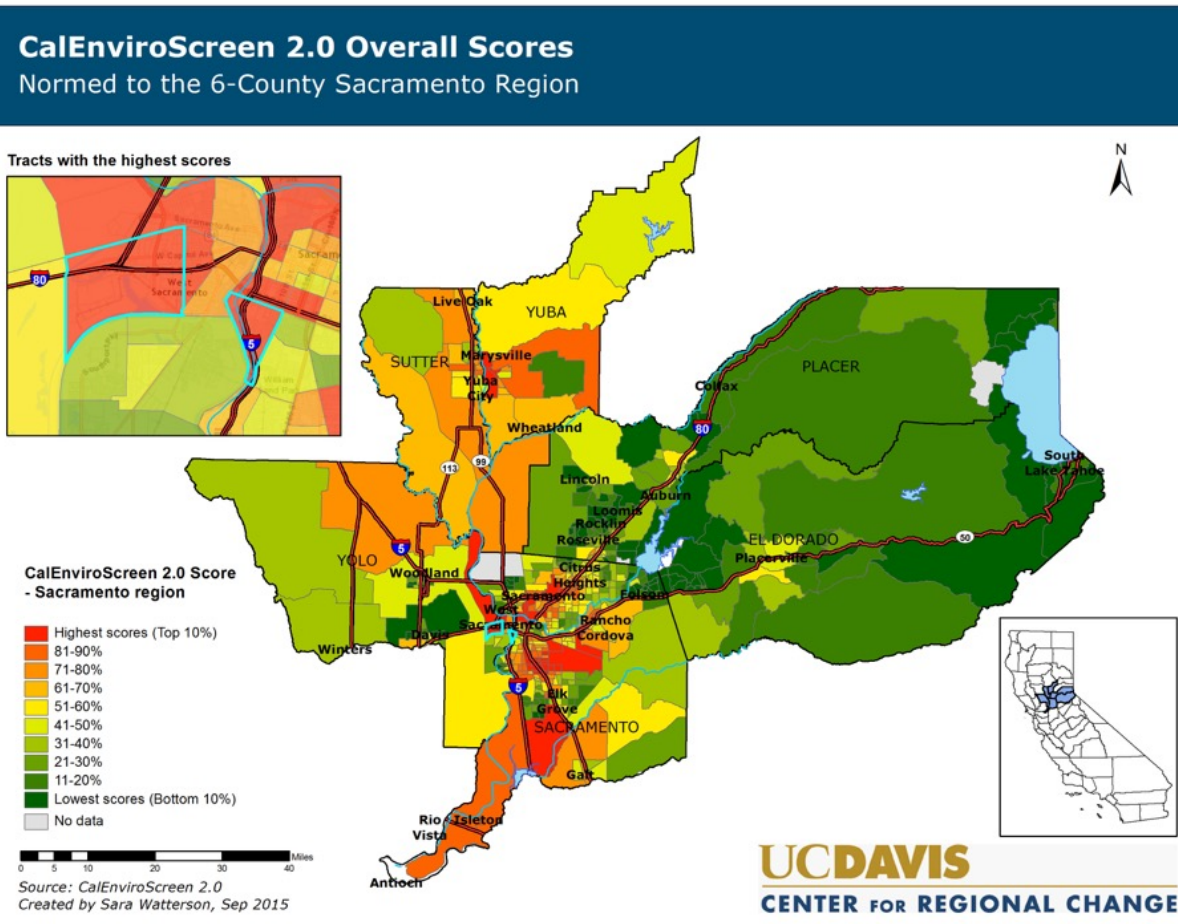
Legend

⌵

✕



IDENTIFYING DISADVANTAGED COMMUNITIES



REGIONAL OPPORTUNITY INDEX



UC DAVIS
CENTER FOR REGIONAL CHANGE

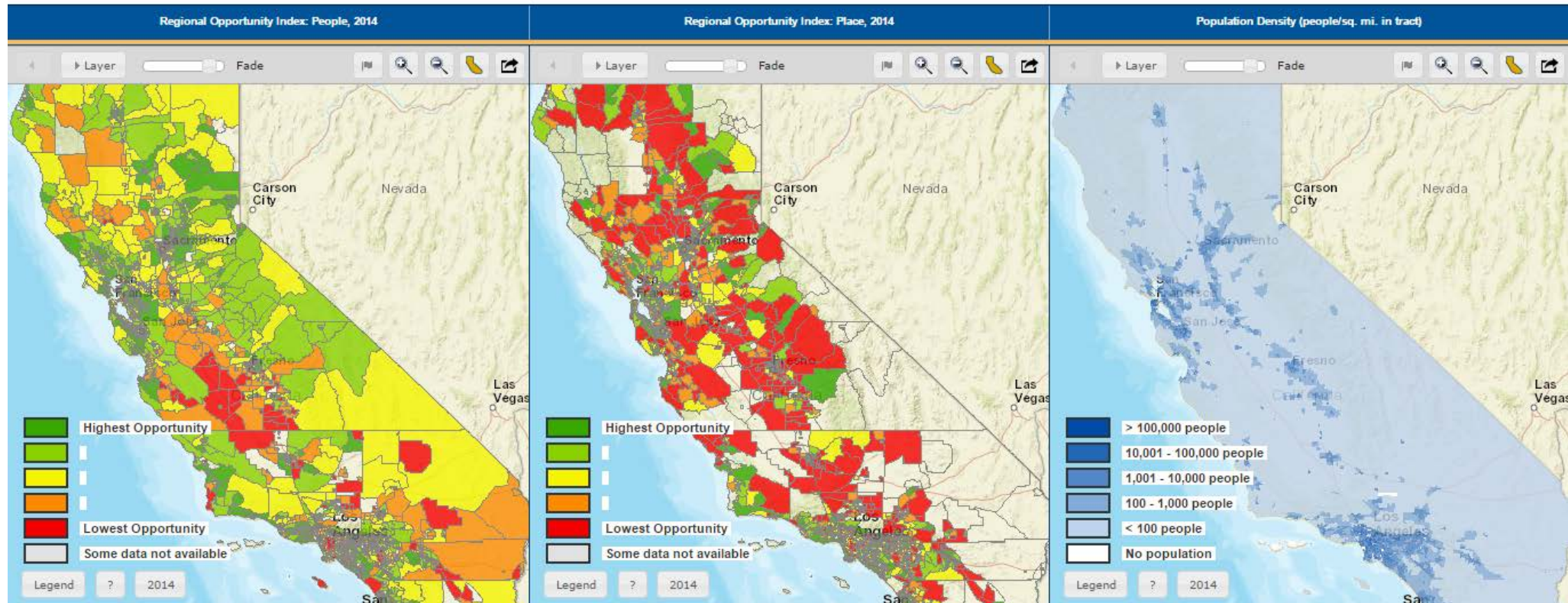
Jump to:

My ROI

Sync Maps: ☒ Scale ☒ Location

Number of Panels:

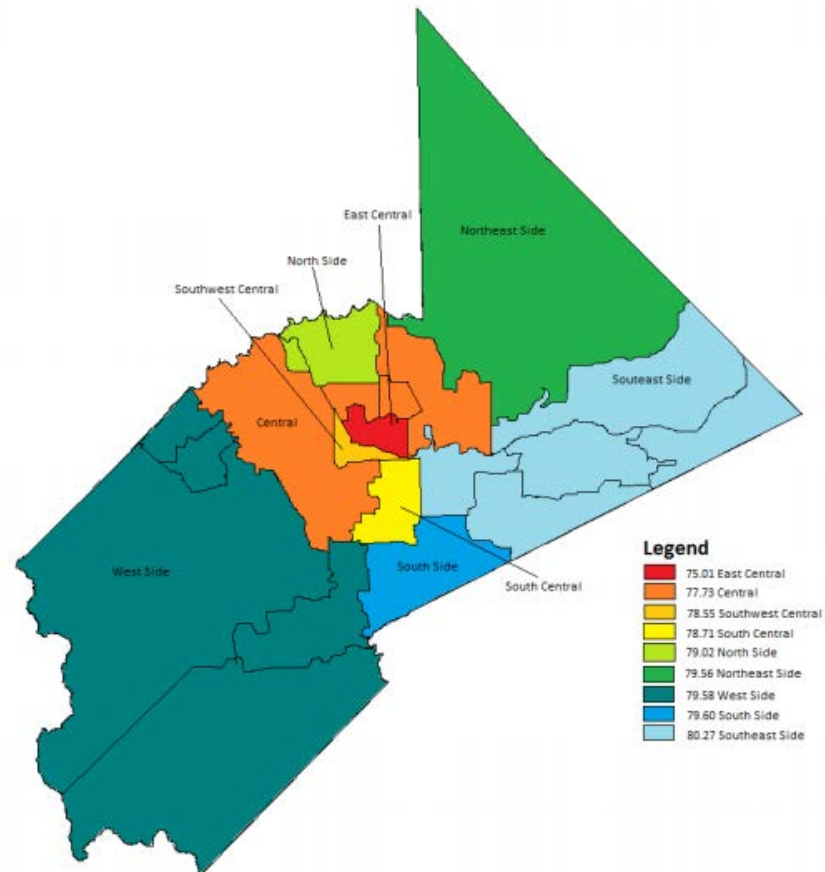
Basemap:



Source: <http://interact.regionalchange.ucdavis.edu/roi/>

COUNTY COMMUNITY HEALTH ASSESSMENTS

Figure 109: Life Expectancy at Birth within Stanislaus County, 2008-2012



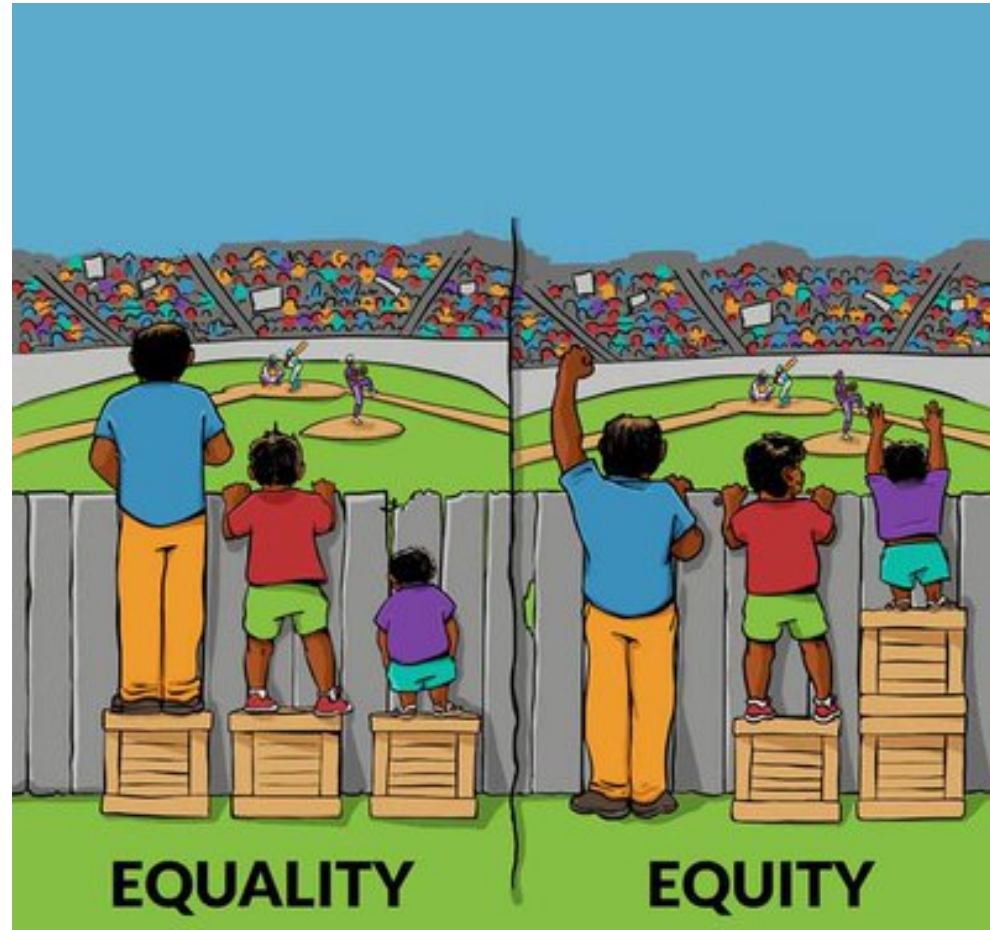
Source: Stanislaus County Community Health Assessment 2013

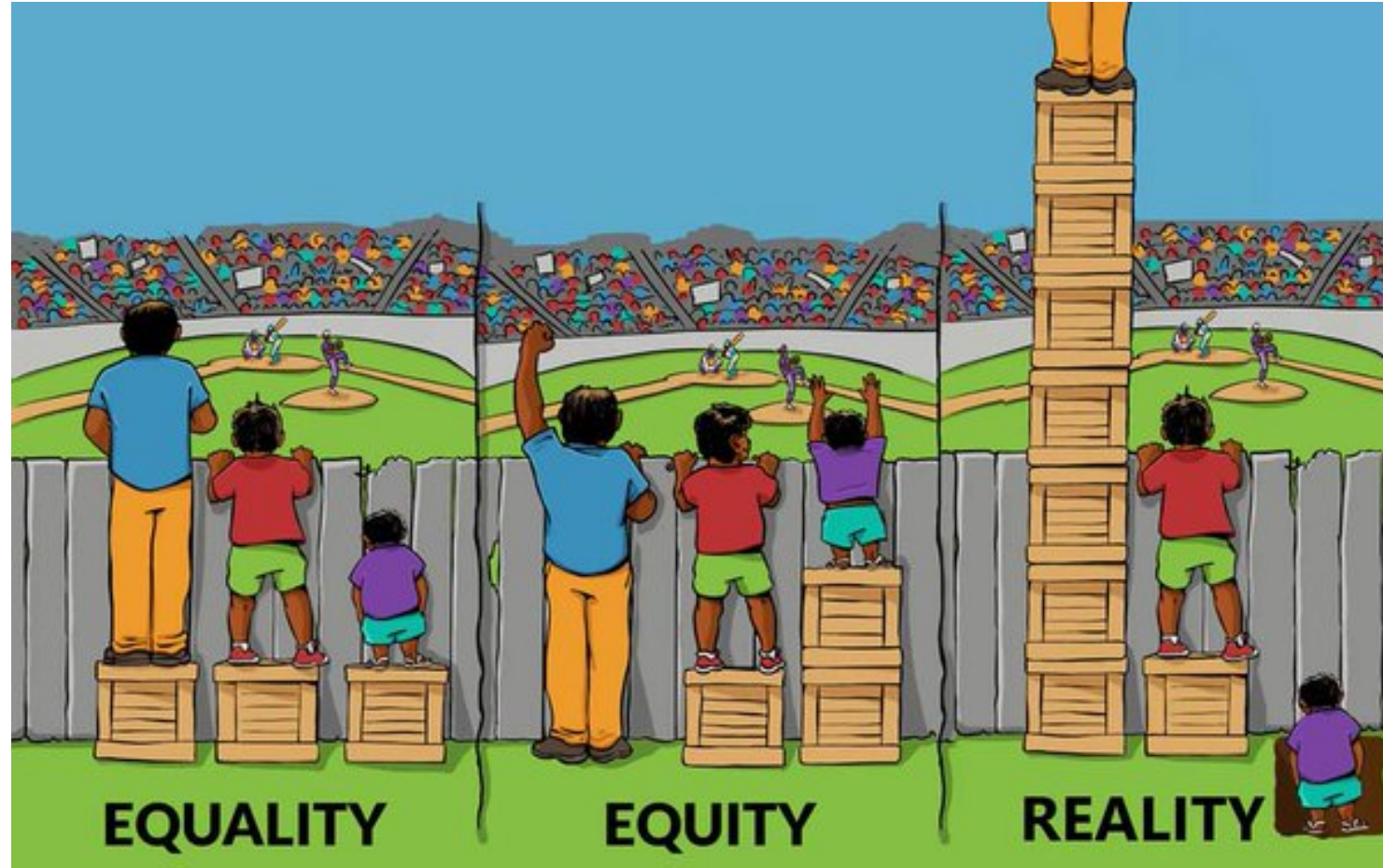
GEOGRAPHIC CORRELATIONS



Health Inequity: Disparities or differences in health and mental health, or the factors that shape health that are systemic, avoidable and therefore considered unjust or unfair.

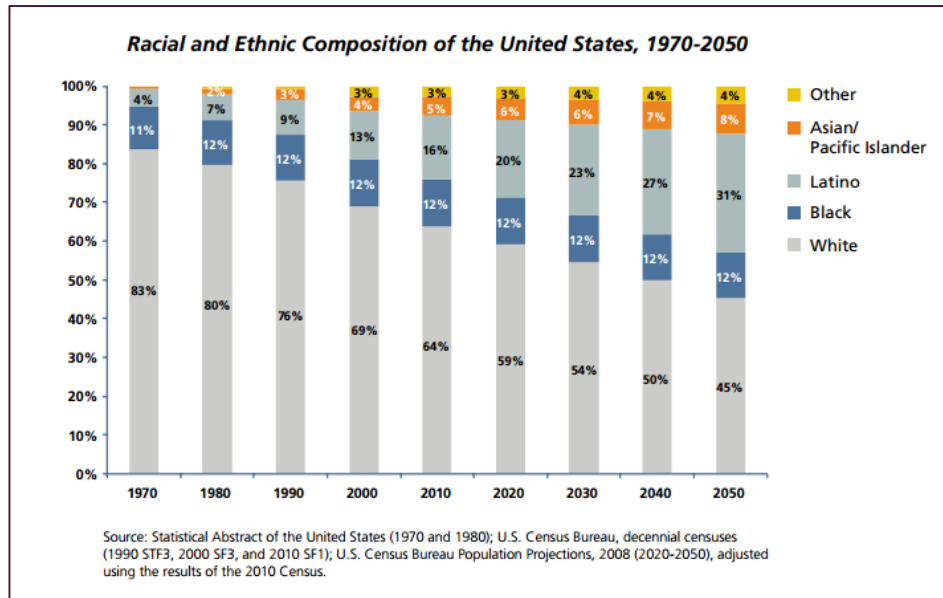
- Our communities were built to racially segregate
- Health outcomes are still favor communities built exclusively for white residents
- **How do we plan to shift land use in communities of color to better promote health equity?**





EQUITY IS THE SUPERIOR GROWTH MODEL

- Economists found that reducing inequality is good for growth
- Diversity is an economic asset
- Building a skilled workforce is critical



PolicyLink
Lifting Up What Matters

America's Tomorrow:
Equity is the Superior Growth Model

PolicyLink Report
prepared with the University of Southern California's Program for Environmental and Regional Equity

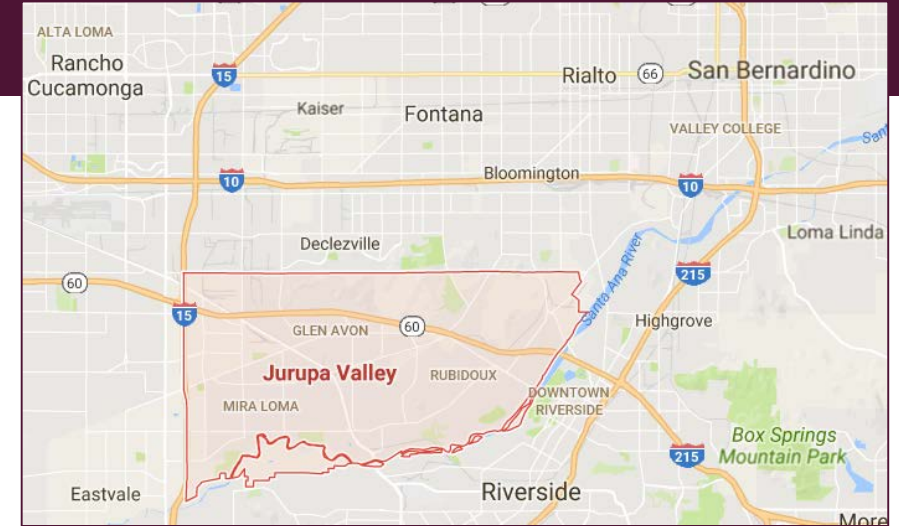
SB 1000



- Identify communities of concern
- Build stronger relationships between underserved communities and planners through robust community engagement policies
- Build the capacity of neighborhoods to engage in complex planning efforts
- Give planners, planning commissioners, communities, and developers **tools to address health equity**
- **Sets a floor, not a ceiling**

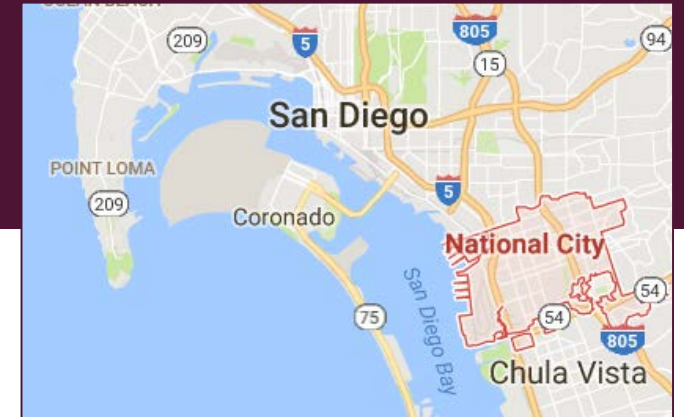
JURUPA VALLEY

- In Jurupa Valley, the Center for Community Action and Environmental Justice (CCA EJ) worked to protect Mira Loma Village, a single-family residential neighborhood, from the impacts of a large development of warehouses.
- The CCA EJ won the lawsuit they filed, and the City of Jurupa was required to adopt an Environmental Justice Element as part of their General Plan.
- The Jurupa EJ Element has extensive policies that aim to protect residents from current and future environmental hazards.
- It addresses things like: public participation and translations services, buffers between schools and transportation corridors, emissions, increased access to shopping, affordable housing, and prioritizing the equitable distribution of public facilities in underserved neighborhoods.



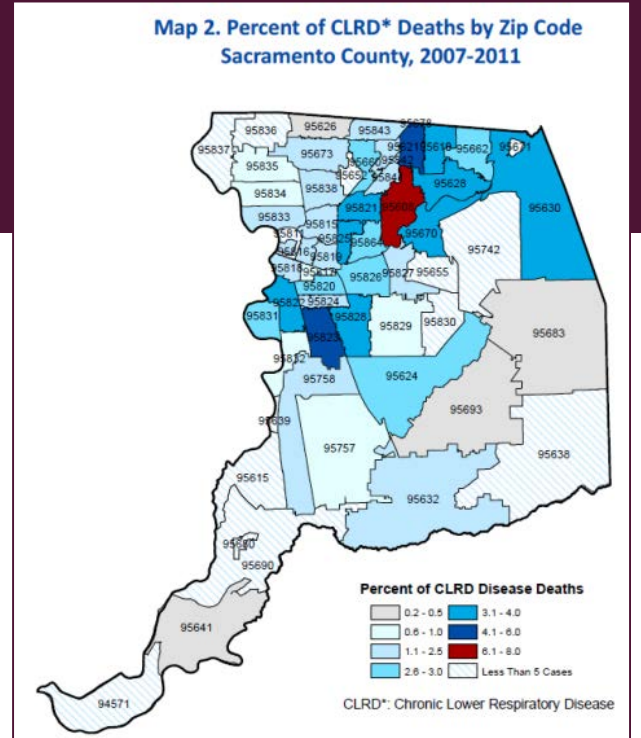
NATIONAL CITY

- In partnership with community leaders and elected officials, Environmental Health Coalition (EHC) developed the Westside Specific Plan which amended old zoning regulations and made it so that non-conforming uses (the polluters) could continue doing business, but could not expand.
- The new Plan and Plan Ordinance, allowed National City to enforce its Amortization Ordinance, which allowed the city to bring these non-conforming uses into compliance, or phase out the business over time.
- EHC is also taking steps to turn a Brownfield (a contaminated piece of land that has been rehabilitated) into a green industrial park where auto repair businesses can be relocated away from residential areas.



VALLEY HI, SACRAMENTO

- Organized to fight a drive-thru proposal in a transit-oriented zone
- Faces the second highest rates of chronic lower respiratory disease attributed death in Sacramento County
- Extensive resident surveying and tri-lingual workshop identified definitions for grocery stores and fast food, more affordable housing, and extensive alternative transportation infrastructure as high priorities



UNINTENDED CONSEQUENCES

- Criminalization of activities
- Rent increases
- Increases in tax auctions or penalties for code violations
- Real estate speculation
- Displacement

- **Gentrification**



THANK YOU!!

katie@vgconsulting.org

<https://www.vgconsulting.org/>

