



Great Places to Get Started!

Elizabeth Baca, MD, MPA

Senior Health Advisor

Governor's Office of Planning & Research

May 26, 2016



Defining Health



A Shifting Paradigm in Health



- Integrated concept of health
 - New partnerships
 - Cross-sector collaboration
- How do we get there?

Significant Initiatives

- Comprehensive state planning
- High level policy to local implementation
- Cross agency coordination/direction
- Local Technical Assistance/Capacity Building
- EO-B-30-15
- AB1482
- General Plan Guidelines Update
- CEQA Guidelines Update
- SB246 (TAC)
- SB379



Significant Initiatives

- Comprehensive state planning
- High level policy to local implementation
- Cross agency coordination/direction
- Local Technical Assistance/Capacity Building
- **EO-B-30-15**
- **AB1482**
- **General Plan Guidelines Update**
- CEQA Guidelines Update
- SB246
- **SB379**



EO B- 30-15 & AB 1482

Institutionalization

- EO S-03-05 – Targets for 2020 and 2050
- EO S-13-08 – Climate Adaptation
- EO B-30-15 – Integrated approach to climate
- Signed in 2015:
 - SB350 – New greenhouse gas emissions targets
 - AB1482 – Safeguarding California and related
 - SB379 – Local governments and climate risk
 - SB246 – OPR, ICARP and Clearinghouse

General Plan Guidelines

General Plan Guidelines



- New and updated chapters
- Community Engagement
 - Healthy Community
 - Social Equity, EJ, & Resilience

Additional Resources

- Example Policies
- Tools
- Data



Chapter 3: Public Engagement & Outreach

“Cities (and counties) have the capability of providing something for everybody, only because, and only when, they are created by everybody.”

--Jane Jacobs

Process Design

- Strategy
- Committee
- Survey other efforts
- Partnership
- Equitable outreach
- Data

Engagement Tools

- In person and remote



Chapter 5: Healthy Communities

“I thought about it while riding my bicycle.”

- Albert Einstein on the Theory of Relativity

Strategies & Approaches

- Partnership & Collaboration
- Sources Health Info

Health Considerations

Health Data & Mapping

- Data Resources
- Examples

Example Policies



Healthy Community Topics



**Active Living &
Recreation**

Ideas for Data and Analysis

- Prevalence child/adult obesity
- Prevalence diabetes
- Prevalence heart disease
- ~
- Land use mix
- Park access
- Commute patterns

Potential Policy Options

- Increase proximity to parks and recreation
- Build connected trail ways to jobs/amenities
- Pursue urban greening programs

Healthy Community Topics



**Social Connection
& Safety**

Ideas for Data and Analysis

- Motor vehicle crashes with pedestrians and bicycles
- Serious psychological stress in the last year
~
- People feel like they can trust neighbors
- Neighbors willing to help each other

Potential Policy Options

- Prioritize joint-use agreements with schools and other facilities
- Incorporate CPTED
- Separate pedestrian, bicycle, auto lanes

Healthy Community Topics



Food Systems

Ideas for Data and Analysis

- Prevalence child/adult obesity
- Prevalence diabetes
- Prevalence heart disease
- ~
- Map of grocery stores
- Map of community gardens
- Map of farmers markets

Potential Policy Options

- Establish a food policy council
- Facilitate use of unused land for community gardens
- Increase access to healthy food retail environments
- Preserve agricultural land

Chapter 6: Social Equity, Environmental Justice, & Community Resilience

"The future is not someplace we are going to, but a place we are creating. The paths to it are not found, they are made."

--Jane Garvey

Social Equity

Definitions

Incorporating Social Equity

- Data, mapping, tools
- Example data

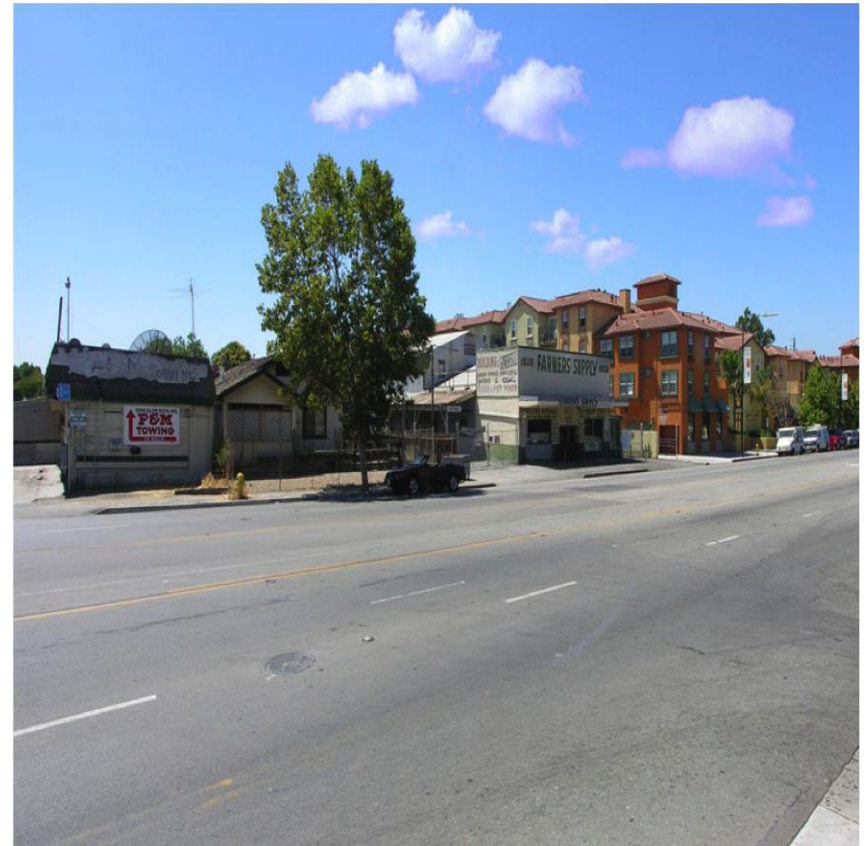
Community Engagement

Supportive Policies

EJ

Community Resilience

Sample Policies

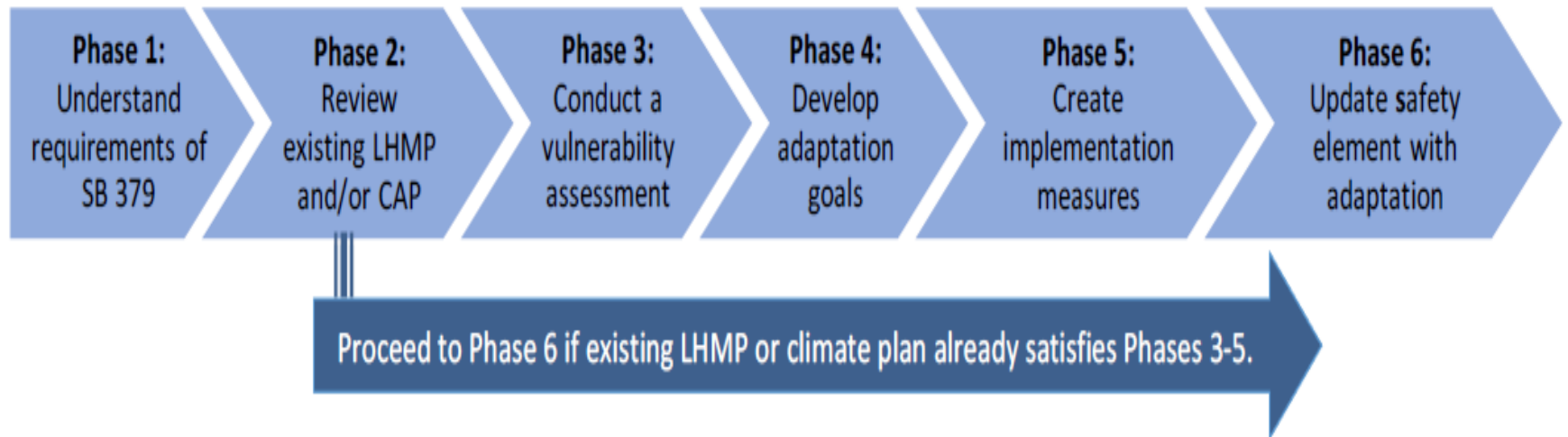


SB 379

GP Guidelines and SB379

- Builds upon AB162 (flood protection) and SB1241 (fire protection) and Supports Safeguarding California implementation.
- Support AB2140 (LHMP and Safety Element integration).
- Requires:
 - A vulnerability assessment
 - Adaptation goals, policies and objectives
 - Set of feasible implementation measures

GP Guidelines and SB379

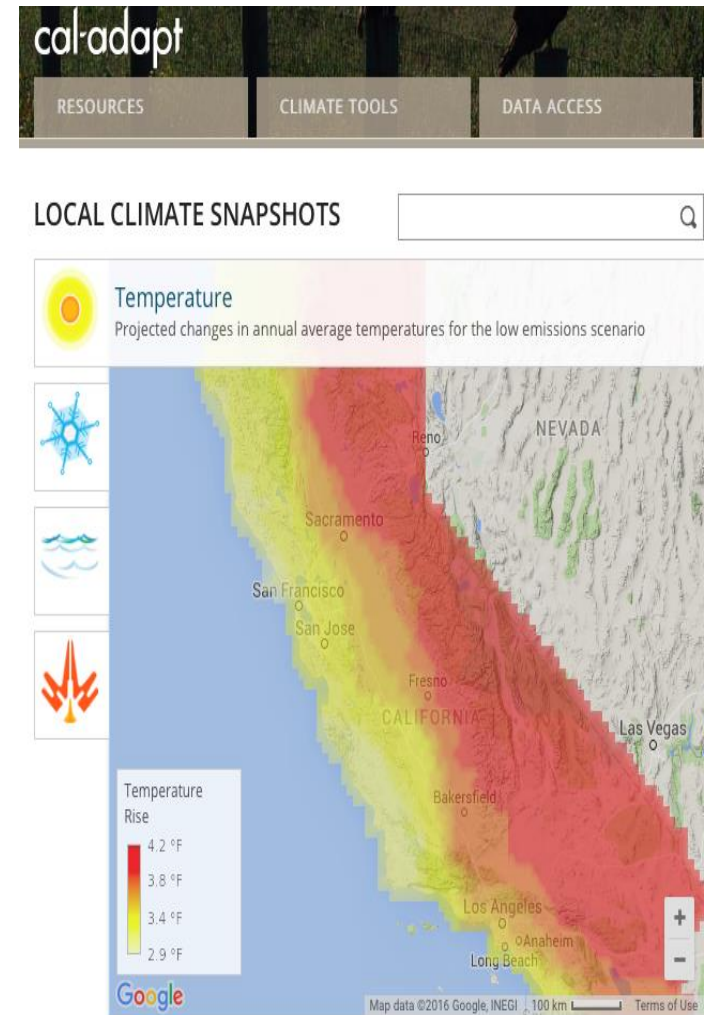


If a jurisdiction has an LHMP, then the next LHMP update must also include a safety element update

If a jurisdiction does not have an LHMP, then the safety element of GP must be updated by 1/1/2022 to include climate adaptation

Potential Next Steps

- SB 379 Public review
- State's 4th Climate Assessment- state mandated research program in climate change
 - Information projected extreme heat impacts
 - And potential health impacts for communities



Thank You

Elizabeth Baca, MD, MPA

Senior Health Advisor

Governor's Office of Planning &
Research

Elizabeth.Baca@opr.ca.gov



Questions?

Image/Source/Photo Credits

IMAGES

Health Word Definition: "Health Word Definition"
by Stuart Miles <http://www.freedigitalphotos.net>

Healthy Community Photo by Urban Advantage,
Dana Point, CA, two-way market and Street
transformation

Caladapt

Other images taken by Elizabeth Baca