



9/25/2015

VIA EMAIL

Robert Williams, Associate Planner  
City of Sacramento Community Development Department  
300 Richards Boulevard, 3<sup>rd</sup> Floor  
Sacramento, CA 95811

**RE: MLK Shell Alcohol C.U.P. and Retail Expansion (P15-029)**

Dear Mr. Williams:

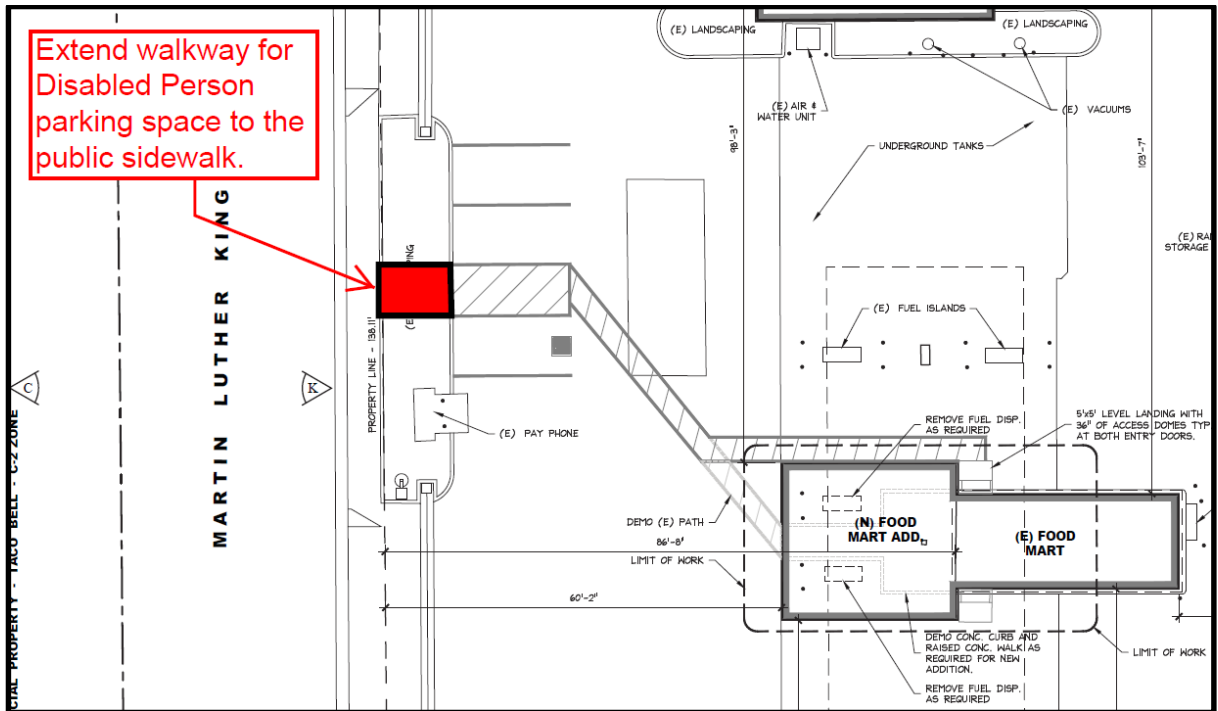
WALKSacramento has reviewed the routing for the MLK Shell Alcohol C.U.P. and Retail Expansion project (P15-029) and have the following comments regarding the site plan for the retail expansion.

Development projects that lead to more walking and active travel are critical to our community's future. Human beings need moderate exercise, such as walking, for about 30 minutes a day in order to prevent the development of chronic disease and overweight. Only 30% of the population in the Sacramento region is active at this minimal level, often due to limitations placed by a built environment not suited to walking and other types of physically active travel. A 30-minute walk is about one and a half miles. If more people could obtain regular exercise by walking and bicycling to their regular destinations, in lieu of driving, it could yield significant health improvements to the resident population of this area. Reduced driving would also decrease vehicle emissions and the prevalence of asthma, cardiovascular disease, and other air pollution-related conditions. More trips by walking and bicycling could help reduce the current expensive burden on the health care system of providing medical care to more and more people with chronic conditions due to inactivity and poor air quality.

The retail expansion of the Shell Food Mart may provide additional opportunities for walking trips. Healthy food and beverages, if sold in the store, could enable local residents to supplement weekly trips to grocery stores with daily walking trips. The Shell Food Mart is the only convenience store near Martin Luther King Jr Boulevard located on the north side of Fruitridge. Several convenience stores and/or small markets are located on the south side of Fruitridge. The Shell Food Mart may see the most walking trips coming from the north along Martin Luther King Jr Boulevard.

The combination of vehicular movements around the gas pumps with pedestrian walking to the food mart makes it important to provide a safe walkway from the street. Currently, any pedestrian wanting to patronize the Shell Food Mart must enter the site through a driveway or by walking through the landscape in the planter. However, there's already a

marked walkway from the Disabled Person parking space to the food mart entrance. This presents an opportunity to construct a walkway from the street to the food mart. Extending the walkway through the landscaped planter behind the Martin Luther King Jr Boulevard would allow persons of all abilities a dedicated walkway, but it would also be a convenient path for transit riders since there's a bus stop on the street side of the planter. The diagram below indicates the recommended placement of the new sidewalk.



WALKSacramento is working to support increased physical activity such as walking and bicycling in local neighborhoods as well as helping to create community environments that support walking and bicycling. The benefits include improved physical fitness, less motor vehicle traffic congestion, better air quality, and a stronger sense of cohesion and safety in local neighborhoods.

Thank you for your consideration of these comments and recommendations. If you have questions or need additional information, please contact me at (916) 446-9255 or [cholm@walksacramento.org](mailto:cholm@walksacramento.org).

Sincerely,  
Chris Holm  
Project Manager

Attachment: Development Checklist for Biking and Walking

# ***DEVELOPMENT CHECKLIST for BIKING and WALKING***

*Prepared by WALKSacramento and SABA (Sacramento Area Bicycle Advocates)  
September 2012*

This checklist is provided to give an indication of design, engineering, and policy elements that we consider when reviewing development projects.

## **POLICIES**

- Walking and biking is a priority
- Adopted a policy to develop a full multi-modal and ADA accessible transportation system

## ***Project Review and Comment***

## **POLICY CONSIDERATIONS**

- Pedestrian Master Plan
- Bicycle Master Plan
- Regional Blueprint
- Regional Blueprint Consistent General Plans
- Adopted Climate Action Plans
- Subdivision ordinances to support pedestrian and bicycle access and safety
- Zoning ordinance to support pedestrian and bicycle access and safety

## **ENGINEERING**

- SIDEWALKS & BIKELANES ON BOTH SIDES OF MAJOR ROADWAYS**
  - Pedestrian Level of Service "C" or better on arterials
  - Bicycle Level of Service "C" or better on arterials
- SAFE CROSSINGS FOR PEDESTRIANS**
  - every 300-600 feet on major arterials
  - well lit, marked crosswalks
  - audible signals & count-down signals
  - median refuge islands
- SPEED MANAGEMENT**
  - Speed limits based on safety of pedestrians and bicyclists
  - Implement "road diets" where there is excess lane capacity
- STREET DESIGN STANDARDS**
  - Maximize pedestrian and bicyclist safety
  - Sidewalks buffered by trees and landscaping on major arterials
  - Vertical curbs
  - 5' minimum sidewalk widths, 8' in front of schools
  - 6' minimum bike lanes on busy streets

- ❑ **INTERSECTIONS**
  - Median refuge islands for pedestrians
  - Signal timing to enable safe passage
  - Signal detection for bicyclists
  - Crossings on all 4 legs of intersections
  
- ❑ **ELIMINATE BARRIERS**
  - Freeway, railroad, river and creek crossings
  - Obstructions in sidewalks and bike lanes

### **NEW DEVELOPMENT – REQUIRE**

- ❑ Walking & bicycling circulation plans for all new development
- ❑ Direct and convenient connections to activity centers, including schools, stores, parks, transit
- ❑ Mixed uses and other transit supporting uses within ¼ mile of light rail stations or bus stops with frequent service
- ❑ Minimum width streets
- ❑ Maximum block length of 400'
- ❑ 4-lane maximum for arterials; Recommend 2 lanes wherever possible

### **NEW DEVELOPMENT – DISCOURAGE**

- ❑ Cul-de-sacs (unless it includes bike/ped connections)
- ❑ Gated and/or walled communities
- ❑ Meandering sidewalks
- ❑ Inappropriate uses near transit (gas stations, drive-thru restaurants, mini storage and other auto dependent uses)

### **BUILDINGS – REQUIRE**

- ❑ Direct access for pedestrians from the street
- ❑ Attractive and convenient stairways
- ❑ Bicycle parking – long & short term
- ❑ Shower & clothing lockers

### **OLDER NEIGHBORHOODS**

- ❑ Improve street crossings
- ❑ Reduce speeds
- ❑ Provide new connections
- ❑ Create short cuts for walkers and bicyclists by purchase of properties or other means
- ❑ Provide sidewalks on both sides of major streets

## *Policy Review and Comment*

### **ENFORCEMENT & MAINTENANCE**

- ❑ Enforce speed limits
- ❑ Enforce crosswalk rules – conduct crosswalk sting operations
- ❑ Enforce restrictions against parking on sidewalks
- ❑ Enforce bicycle rules including riding with traffic, lights at night, stopping at red lights
- ❑ Implement CVC 267 setting speed limits based on pedestrian and bicyclist safety
- ❑ Sweep streets and fix hazards
- ❑ Repair and replace broken sidewalks

### **EDUCATION**

- ❑ Train staff on pedestrian and bicycle facility design.
- ❑ Train development community about pedestrian and bicycle planning and safety issues
- ❑ Bicycle skills training

### **FUNDING**

- ❑ Include pedestrian and bicycle facilities in capital improvement programs
- ❑ Include pedestrian and bicycle facilities as a part of roadway widening and improvement projects
- ❑ Support Measure A pedestrian and bicycle facility allocation
- ❑ Set priorities based on safety and latent demand
- ❑ SACOG Community Design grants & Bike/Ped grants
- ❑ California Bicycle transportation Account
- ❑ Safe Routes to School

*www.walksacramento.org*

*www.sacbike.org*

WALKSacramento  
909 12<sup>th</sup> Street, Suite 203  
Sacramento, CA 95814  
(916) 446-9255

Sacramento Area Bicycle Advocates  
909 12th Street, Suite 116  
Sacramento, CA 95814  
(916) 444-6600