
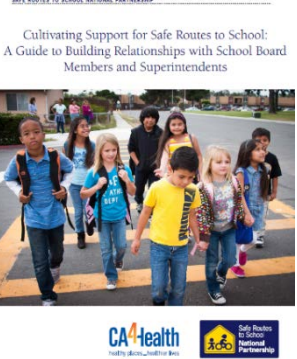
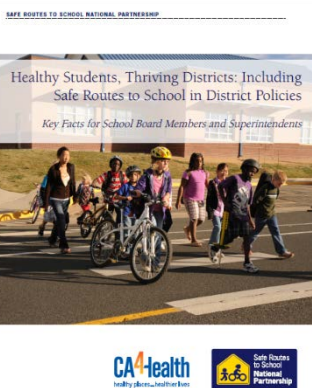


# 2015 Safe Routes to School Policy Workshop

## Additional Resource List

Publication Name	Publication Location	Publication Front Page
<p>Backing off Bike Bans: The Legal Risks of Banning Bicycling to School</p>	<p><a href="http://changelabsolutions.org/sites/default/files/Backing-Off_Bike-Bans_FINAL_20130715_0.pdf">http://changelabsolutions.org/sites/default/files/Backing-Off_Bike-Bans_FINAL_20130715_0.pdf</a></p>	
<p>Cultivating Support for Safe Routes to School: A Guide to Building Relationships with School Board Members and Superintendents</p>	<p><a href="http://saferoutespartnership.org/sites/default/files/pdf/Cultivating-Support-for-Safe-Routes-to-School.pdf">http://saferoutespartnership.org/sites/default/files/pdf/Cultivating-Support-for-Safe-Routes-to-School.pdf</a></p>	
<p>Healthy Students, Thriving Districts: Including Safe Routes to School in District Policies</p>	<p><a href="http://saferoutespartnership.org/sites/default/files/pdf/Healthy-Students-Thriving-Districts.pdf">http://saferoutespartnership.org/sites/default/files/pdf/Healthy-Students-Thriving-Districts.pdf</a></p>	



## Integrating Safe Walking and Bicycling to School into Comprehensive Planning

[http://saferoutesinfo.org/sites/default/files/news/SRTS\\_brief\\_IntegratingCompPlan-FINAL.pdf](http://saferoutesinfo.org/sites/default/files/news/SRTS_brief_IntegratingCompPlan-FINAL.pdf)

### Integrating Safe Walking and Bicycling to School into Comprehensive Planning

In many communities, roads, schools, and neighborhoods have developed in ways that make it difficult, unsafe, or impossible for children to get to school by foot or bicycle. However, some communities are taking steps to make streets and neighborhoods better. One key way that communities go about determining how they want to change and develop in the future is through a process known as comprehensive planning. Many communities are revising their comprehensive plans to include Safe Routes to School concepts and address walking and bicycling to school. Safe Routes to School describes the initiatives that focus on encouraging students to walk and bicycle to school and making it safer for them to do so, as well as the involvement of advocates and stakeholders who support these efforts. Safe Routes to School projects are eligible for funding under federal transportation programs, and may be eligible under some state programs. By including considerations and action items on walking and bicycling to school in comprehensive plans, decisions about the future of our communities can include safe and active travel to school.

#### What is a Comprehensive Plan?

A comprehensive plan acts as a blueprint for a community's future. A comprehensive plan is a written document that starts with residents' vision for how they want the community to look and feel in the future - what kind of place they want it to be. Building off of the current community conditions, the comprehensive plan details the specific goals, objectives, policies, and action steps that, if implemented, will lead to a realization of that vision. Does a middle town in an agricultural region want to stay aligned with its rural culture while becoming a home to "sprawling new industry"? Does a small city want to reorganize its downtown and maintain the peaceful feel of its neighborhood? The comprehensive plan is the place where the large and small steps necessary to achieve these kinds of goals are spelled out.

Comprehensive plans vary in their legal strength and effect from state to state. In some states, zoning codes must conform to comprehensive plans, and development that is contrary to a plan is illegal. In other states, comprehensive plans provide a vision and guidelines, but may not be enforceable. State law or regulations may spell out how frequently a comprehensive plan must be updated, and will they set out the topic areas that must be addressed by the comprehensive plan. And whatever the legal weight of a comprehensive plan, all comprehensive plans play a role in articulating how a community should develop and guiding investments and actions by private individuals and local officials.

#### Terminology:

**Safe Routes to School or Walking and Bicycling to School**  
In some communities, the phrase "Safe Routes to School" is widely used and well known. In others, the term may be unfamiliar or too jargon-y and it makes more sense to just say "walking and bicycling to school." When thinking about language for the comprehensive plan, the goal is to be clear for present and future readers while capturing the full spirit of what is envisioned, so a community can seek whichever phrase resonates more for them.

Developed by the Safe Routes to School National Partnership for the National Center for Safe Routes to School

## Model General Plan Language Supporting Safe Routes to Schools

[http://changelabsolutions.org/publications/SRTS\\_general-plans](http://changelabsolutions.org/publications/SRTS_general-plans)



Made possible by CA4Health, a project of the Public Health Institute, with funding from the Centers for Disease Control and Prevention.

[changelabsolutions.org](http://changelabsolutions.org)

## Technical Assistance to Get Kids Walking and Bicycling Through Community Scale Policy Strategies

[http://www.saferoutespartnership.org/sites/default/files/pdf/One-Pager\\_hi\\_res.pdf](http://www.saferoutespartnership.org/sites/default/files/pdf/One-Pager_hi_res.pdf)

### Technical Assistance to Get Kids Walking and Bicycling Through Community Scale Policy Strategies

For more than a decade, Safe Routes to School programs have flourished across the country using the power of quality programming to raise awareness and change habits. Now, communities are becoming more walking and bicycling to school and safer through sustainable, long-term policy change. The Safe Routes to School National Partnership can help your community or school district to build local leadership and community support, establish walking and bicycling policies and programs, address needs, and institutionalize ongoing funding and policy changes that support active transportation and Safe Routes to School.



**Utilize Our Expertise!**  
The Safe Routes to School National Partnership (National Partnership) provides Technical Assistance based upon the specific needs of each city, county and/or school district walking assistance. Our topics include:  
**Individualized Technical Assistance**  
Each community is unique. Through our individualized technical assistance we provide strategic support for local programs and policy leaders via telephone calls and email correspondence on an as-needed basis. We will listen to your needs, and our expert staff can help plan your policy change efforts. We can conduct webinars and conference presentations, provide best practices and case studies from around the country and we work closely with policy leaders with developing materials and action plans for grant applications, and help your community leverage additional funding for programs and infrastructure.

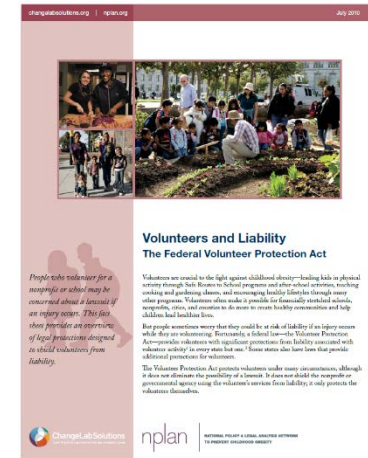
**Workshops**  
We can help you to produce and/or implement walking and bicycling to school and active transportation policy workshops designed to get critical stakeholders thinking about and invested in the policy future and community-wide Safe Routes to School efforts. These workshops can be combined with local needs assessment presentations, participating in and/or leading stakeholder meetings, and/or conducting walkabouts or events to assess infrastructure needs. We can also follow up with you for phone and email as needed to address any questions to build upon the meetings with stakeholders, and to develop materials and action plans.

**Keynote Addresses**  
Sometimes community leaders need to be inspired by national experts. Our prominent and inspiring speakers bring best practices from around the country and the world, and an energy and challenge that will inspire positive change. The Safe Routes to School National Partnership can help further charge your community into action.

[www.saferoutespartnership.org](http://www.saferoutespartnership.org)

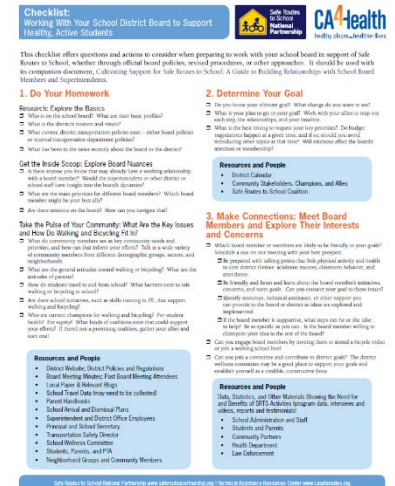
## Volunteers and Liability: The Federal Volunteer Protection Act

[http://changelabsolutions.org/sites/default/files/Volunteers Liability Fact Sheet FINAL \(CLS-20120530\)\\_20100727.pdf](http://changelabsolutions.org/sites/default/files/Volunteers%20Liability%20Fact%20Sheet%20FINAL%20(CLS-20120530)_20100727.pdf)



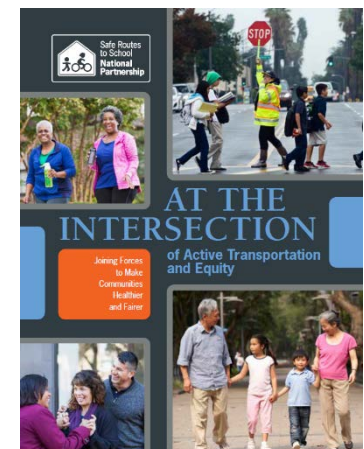
## Working With Your School District Board to Support Healthy, Active Students

<http://saferoutespartnership.org/sites/default/files/pdf/Working-With-Your-School-District-Board-to-Support-Healthy-Active-Students.pdf>



## At the Intersection of Active Transportation and Equity

<https://www.apha.org/topics-and-issues/transportation/reports-and-fact-sheets>



Taking Back the Streets and Sidewalks: How Safe Routes to School and Community Safety Initiatives can Overcome Violence and Crime

<https://www.apha.org/topics-and-issues/transportation/reports-and-fact-sheets>



Safe Routes to School Local Policy Guide

[http://www.saferoutespartnership.org/sites/default/files/pdf/Local\\_Policy\\_Guide\\_2011.pdf](http://www.saferoutespartnership.org/sites/default/files/pdf/Local_Policy_Guide_2011.pdf)

