

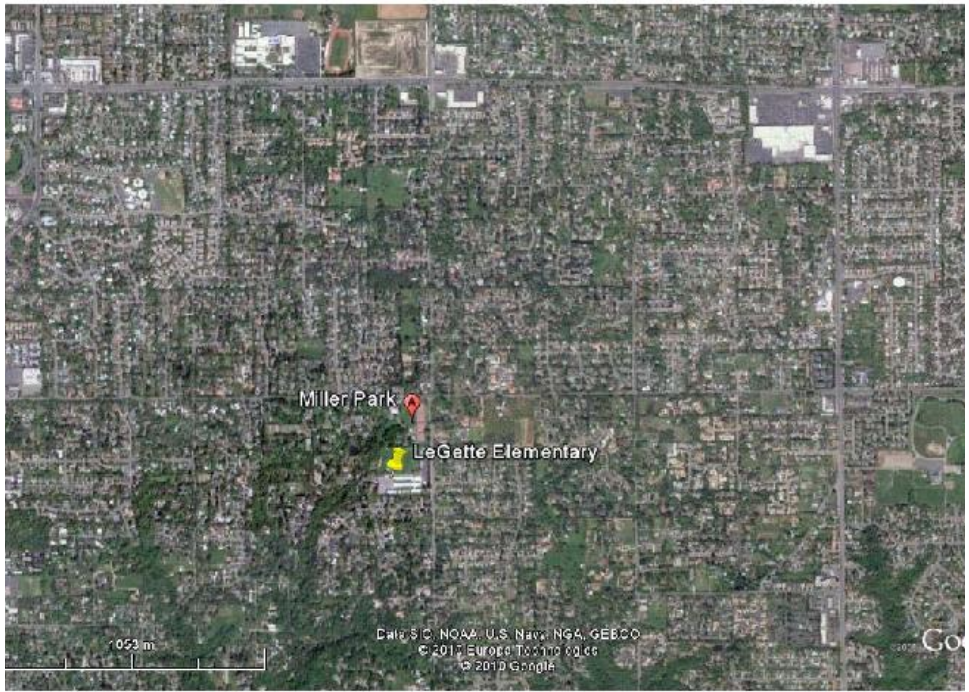
*Getting Started  
with Safe Routes to Schools*

**Earl LeGette  
Elementary School**

Presented by:  
Selena McKinney

**The Good**

- LeGette is a K-6 school with 581 students and lots of parent participation.
- It's in a neighborhood that is primarily pedestrian and bike friendly—with a few problem areas.
- There is a County-funded crossing guard at Kenneth & Sunset.



## The Bad

- There are “disconnects” where pedestrians and bicyclists cannot safely complete their trip.
- Parking lot has **one** entrance/exit.
- Heavy traffic congestion around the school = chaos for pedestrians and bicyclists.

## The Ugly

- One of our major crosswalks is on the crest of a hill with poor visibility and poor signage.
- People in cars (yes...our parents) do unsafe things.

## Intersection at Hans Engle & Kenneth

- On the crest of a hill—cannot see crosswalk as you approach.
- Signs are difficult to see.
- The roadway widens, allowing cars to maneuver in unpredictable ways.





Can you find the “School Crossing”  
sign? Can you see the crosswalk?



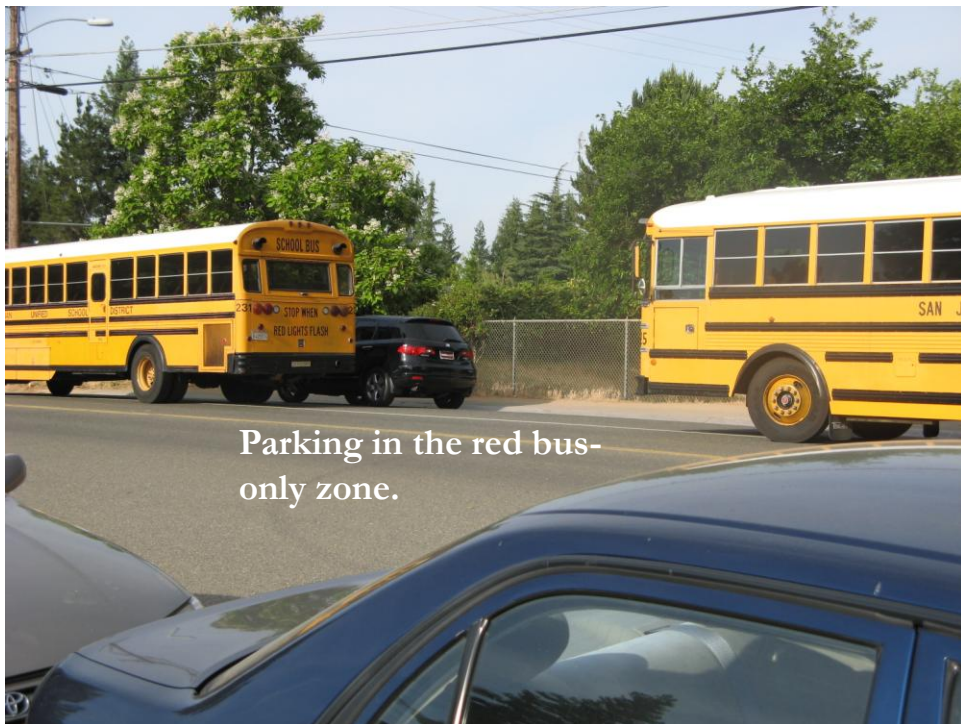
U-turn into bus  
parking zone.





Yikes! Bending  
down for a dropped  
object.

Wary Grandma surveys the  
situation.



Parking in the red bus-  
only zone.



Really? You're going to make a U-turn in the sidewalk when kids are around?

## Parking Lot

- One way in and out.
- No left / right turn lanes
- Poor visibility entering street
- Poor signage
- "Crosswalk" is not striped, only a sidewalk across driveway.



This sign says  
"Caution: Student  
Crossing Ahead"

This sign says  
"School  
Crossing"

One lane in.

One lane out



Hidden sign faces  
across street, not  
toward traffic.



This is the “crosswalk”

Sign as you exit parking lot.



Cars need to pull onto “crosswalk” for visibility to street

## Alternative Route Through Miller Park

- Miller Park has a parking lot with one lane in and out—good potential drop zone.
- There is a walkway most of the way across the park.
- Access between school and park needs fixing.





## Solutions...

- **Physical barriers**—are the only thing that will make people drive where you want them to, and not drive where you don't want them
- **Visibility**—better signage and raised or better striped crosswalks.
- **Education**—promote walking and biking.

# LeGette's History: Addressing the Problems

## In October 2006

- Parents & Principal contacted Sacramento DOT and requested an evaluation and improvements, consideration for SRTS grant.
- The County visited the school and added signage.
- The problem was marginally addressed, but we were on the DOT radar.

## Other Contacts

- Feb, 2008: Principal notified the DOT that signage wasn't enough.
- May, 2008: I followed up with clear statement of the problem to DOT, asked to be considered for a SRTS grant
- Sept, 2009: Reminded DOT of request. Asked to still be considered for grant.

## First Steps

- I attended the Safe Routes to Schools Conference and collected lots of info.
- I spoke to Sacramento DOT to let them know we were still interested in resolving issues.
- I met Terry Preston and got to know about WalkSacramento

## Safe Routes to Schools Committee Formed

- In fall 2009, we formed a SRTS committee whose members were...
  - (me) A transit planner by profession, prior PTA president, at the school for 10 years
  - A dad who is a CHP officer.
  - A mom with children who wanted to bike to school.
  - A mom who works for DMV and was concerned with safety.

## Next Steps

- We were awarded a grant for an evaluation of our school's needs including a Walk Audit.
- Our committee met regularly over the year to discuss progress and met with WalkSacramento staff.
- We identified our needs and kept our school informed through our school newsletter.
- We contacted LOTS of people to join our Walk Audit in the spring

## Our Walk Audit

- We had the following attendees:
  - Sacramento DOT
  - CA CHP
  - Highway 50 TMA
  - Walk Sacramento
  - UC Davis Health Center
  - San Juan Unified
  - LeGette Principal
  - Parents

## Walk Audit Results

- Excellent area representation on our walk.
- Clearly identified and defined the problem areas.
- WalkSacramento produced and submitted a report to the Sacramento DOT.

## Where we are now...

- No grant through DOT. We will keep trying!
- We will work through our school district to apply for a grant and partner on improvements.
- We temporarily have cones in place to calm traffic and prohibit U-turns.
- We are starting a walking program.
- We hope to have a bike rodeo in the spring.